

Titus+ Tekform



Alifrost® aluminium framed
Perspex®, acrylic, glass and
alimesh® insert cabinet doors
for...

- ... Kitchens & bathrooms
- ... Vanity mirrors
- ... Alfresco kitchens
- ... Speaker covers
- ... Wardrobes
- ... Caravans & motorhomes

alifrost® doors

alifrost® aluminium framed doors and panels are available in 10 designer frames with 30 genuine Perspex®, 3D Gloss acrylic, glass and alimesh® inserts

Alifrost® is a range of aluminium framed Perspex®, 3D gloss acrylic, glass & AliMesh® doors & panels that give a superior appearance without the design limitations, installation, weight, safety and colour restrictions of traditional cabinet doors.

With an exclusive range of European designed frames, combined with the latest decorative insert colours, alifrost® offers a modern look at a cost effective price.

Alifrost® offer designer appeal, the confidence of a **10 year guarantee***, applicable on all genuine Perspex® grade inserts and numerous practical **advantages...**

HIGH GLOSS FINISH: When supplied with Perspex® acrylic inserts, alifrost® doors offer an ultra high (glass like) gloss appearance.

PRACTICAL: Alifrost® doors are easy to look after and will not chip like paint. When supplied with a Perspex® Frost insert, alifrost® doors have a unique 'anti fingerprint' finish which reduces the need for cleaning.

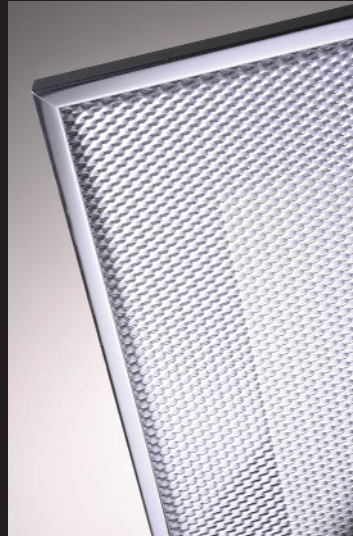
HYGIENIC: When inserted with Perspex® acrylic, Alifrost® doors are ultra hygienic making them ideal for food preparation areas like kitchens. Perspex® is compliant with EU food contact regulations.

SAFETY: Alifrost® doors with Perspex® inserts offer superior impact resistance over glass and will not shatter into potentially harmful sharp particles.

LONGEVITY: Alifrost® doors with Perspex® inserts are half the weight of glass doors, making them much easier to use. Their light weight puts less stress on hardware components and makes larger doors practical.

QUALITY: Alifrost® doors are made to strict quality standards. A **10 year guarantee*** is also applicable on all genuine Perspex® grade inserts.

RECYCLABLE: Alifrost® cares for the environment. In all parts of its' operations, alifrost® takes its' responsibility to the environment very seriously. The two main components of an alifrost® door, aluminium and Perspex®, are both fully recyclable.



< 6x45 Box PS /
Clear Anodised 00001

Alifrost® doors with AliMesh® inserts are ideal for audio visual equipment cabinets where air circulation is required to prevent over heating.

It's also a great solution for use as speaker covers.



< Slimline 55 /
Midnight Black S2 9221

Alifrost® doors with Perspex® Midnight Black inserts make a great chalk board alternative.





▲ 55 Slimline / Shadow Grey 9563
 Only Alifrost™ doors use genuine Perspex® acrylic inserts. Perspex® colours have a 10 year guarantee against fading and other effects of the weather, making them ideal for alfresco applications.



New York Chalk drawing
 designed by Mitchell Laminates



▲ 55 Slimline Black / Opal 069

◀ 55 Slimline Black Powder Coat / Midnight Black S2 9221
 Want wow factor, Alifrost® doors with Perspex® Midnight Black inserts make a great chalk board option. Imagine creating your own chalk drawing like this New York inspired landscape.

alifrost® frames

10 latest European frame designs, hollow construction for added rigidity and a thicker, anodised coating for longevity



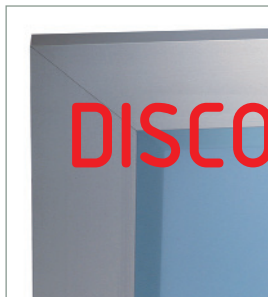
19 Square

- > Superior clear anodised finish (CA)
- > Hollow construction for rigidity
- > Suitable for all insert types
- > **Integrated handle option available**
- > Recommended for hinged & bi-fold doors, sliding & lift flap doors
- > **Powder coat colours now available**



45x45 Flat

- > Superior clear anodised finish (CA)
- > Hollow construction for rigidity
- > Suitable for all insert types
- > Recommended for hinged doors, lift flap and lift up doors, drawers and sliding doors
- > **Powder coat colours now available**
- > **Discontinued**



43x55 Flat

- > Superior clear anodised (CA)
- > Hollow construction for rigidity
- > Suitable for all insert types
- > **Integrated handle option available**
- > Recommended for hinged doors, lift flap and lift up doors, drawers and sliding doors
- > **Discontinued**



45x45 Flat BS - Brushed Stainless

- > Superior clear anodised finish (CA)
- > Hollow construction for rigidity
- > Suitable for all insert types
- > Recommended for hinged doors, lift flap and lift up doors, drawers and sliding doors
- > **Discontinued**



43x55 Flat - Euro Stainless

- > Superior Euro Satinless (ES) finish to match the latest Euro appliances
- > Hollow construction for rigidity
- > Suitable for all insert types
- > Recommended for hinged doors, lift flap and lift up doors, drawers and sliding doors



6x45 Box CA

- > Superior clear anodised finish (CA)
- > Hollow construction for rigidity
- > Suitable for all insert types
- > **Highly recommended for use with glass as a vanity mirror door**
- > **Powder coat colours now available**



9x55 Box

- > Superior clear anodised (CA) finish
- > Hollow construction for rigidity
- > Suitable for all insert types
- > **Integrated handle option available**
- > Recommended for hinged doors, lift flap and lift up doors, drawers and sliding doors
- > **Powder coat colours now available**



6x45 Box PS - Polished Silver

- > NEW polished silver finish with anti scratch ribbed back
- > Hollow construction for rigidity
- > Suitable for all insert types
- > **Highly recommended for use with glass as a vanity mirror door**



AliHandle™

- > Superior clear anodised finish
- > New Integrated, flush fitted handle option
- > **Suitable for 19 Square, 43x55 Flat CA, 9x55 Box & 55 Slimline**
- > 50, 100 & 150mm length options



55 Slimline

- > Superior clear anodised finish
- > Hollow construction for rigidity
- > Suitable for non-translucent (NT) inserts only (see page 7)
- > **Integrated handle option available**
- > **Highly recommended for use with new 3D Gloss (acrylic) inserts**
- > **Powder coat colours now available**



< 6x45 Box CA /
Glass Safety Mirror

Specifically designed for use as a **vanity mirror door**, this frame creates a minimalist look, while holding and protecting the mirrored glass, (in accordance with Australian Standard 1288), from chipping prior to and during installation.

This frame is also available in a polished silver finish, - see below.



^ 55 Slimline Black / Midnight Black S2 9221

< 19 Square / Hot Chocolate S25T33

Create this unique coloured translucent effect with 'anti fingermark' finish, for easy cleaning.

Doors can be back lit for extra "wow" factor

alifrost® inserts options

Perspex® -ultra high gloss

- 01 Black 962
- 02 Café Latte 5263
- 03 Clear 000
- 04 Opal 010* - 70% LT
- 05 Opal 030 - 70% LT
- 06 Opal 069 - 9% LT
- 07 Scarlet Rose 4262
- 08 Shadow Grey 9563
- 09 Vanilla 9638
- 10 Green 6T81

Perspex® Frost -anti fingermark finish

- 11 Crystal Clear S2 000
- 12 Charcoal Dusk S2 9T23
- 13 Glacier Green S2 6T21
- 14 Earth Brown S2 5T33
- 15 Polar White S2 030
- 16 Moonlight White S2 1T41
- 17 Midnight Black S2 9221
- 18 Desert Beige S2 5268
- 19 Walnut Brown S2 5269
- 20 Ash Grey S2 9642
- 21 Mineral Grey S2 9643

Perspex® Pearlescent -metallic lustre

- 22 Pearl 1PY1
- 23 Platinum 9PY2

Euromir® -decorative acrylic mirror

- 24 Grey 40

Glass

- 25 Clear Glass (Toughened)
- 26 Frosted Glass (Toughened)
- 27 Glass Safety Mirror

AliMesh® -one way vision aluminium mesh

- 28 Clear Anodised 00001
- 29 Black 19268
- 30 White 81880
- 31 White Birch 37131



Alum Composite

- 32 **New** Brushed Silver AC32
- 33 **New** Metallic Charcoal BC44W
- 34 **New** Metallic Silver BC25

Perspex® Impressions linear - textured

- 35 Clear P1 000
- 36 Opal P1 030
- 37 Grey P1 9T1D
- 38 Black P1 9221
- 39 Brown P1 5T23

Other inserts available on request

Colours shown are an illustrative guide only,
final decisions should be made from samples.




= translucent LT = Light Transmission Level



alifrost® applications

From **kitchens** to **alfresco** areas and everything in between, alifrost® framed doors & panels are as **versatile** as they are beautiful.

Some typical applications for alifrost®;

1. Kitchen / bathroom doors, drawers & lift up panels
2. Entertainment units - Did you know, that a remote control will work through most Perspex® inserts*?
3. Speaker covers - alimesh® inserts only 
4. Caravans - light weight, reduces costs
5. Large sliding panels and room dividers - light weight reduces costs and increases functionality
6. Outdoor applications i.e. Alfresco kitchens - Perspex® is guaranteed for 10 years in exterior applications such as alifrost® doors.*



< 19 Square
Polar White S2030

alifrost® extras

Customise your designs with **print**, **powder coated frames**, **integrated handles** and multiple insert options.

What makes alifrost® truly unique is the ability to customise your designs;

1. Printed patterns, available on request, minimum quantities apply
2. Custom colours and powder coated frames, available on request, minimum quantities apply
3. NEW alihandle™ - Integrated handle (see page 3), available on all frames
4. Multiple inserts with alirail® (see opposite)



AliRail

- > Cross rail for multiple inserts & added rigidity
- > Suitable for 19 Square, 9x55 Box & 43x55 Flat frames
- > Recommended for doors & panels larger than 1.92 sqm

< 19 Square with alirail®
Clear Anodised 00001

*Remote control will not work through Euomir reflective, glass and pearlescent inserts. *Exterior applications exclude 55 Slimline frame and apply to selected Perspex Gloss (NT) and Perspex Frost inserts only. Conditions apply with guarantee. 10 year guarantee applies to Perspex grade acrylic insert only and excludes frame, hardware and fixing methods.



Titus Tekform Locations

Sydney
02 9826 0007

Adelaide
08 8447 3700

Newcastle
02 4954 4011

Hobart
03 6273 1199

Melbourne
03 9737 5566

Brisbane
07 3266 3999

Wodonga
02 6056 3188

Townsville
07 4779 1366

info@titustekform.com.au

www.titustekform.com.au