

# Tekform Slimline Drawers

**Tekform** Titus<sup>+</sup>

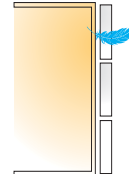
## **Slimline Double Wall Drawers** Lifelong Consistent Performance

For elegant design without compromising on performance, Tekform Slimline is the double wall drawer of choice.

- Narrow 14mm sides for a sleek look and increased drawer space
- No rails required for uniformity across all four heights
- Tuned performance with Titus proprietary adjustable damping
- Interchangeable with the Tekform DWD for a consistent drawer system
- User-friendly installation with less parts and EasyFix front connectors

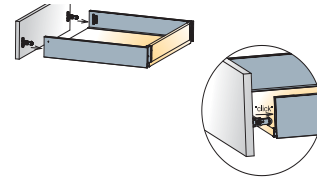
## Titus Damper Inside

- Reliable damping and closing action at any door weight and any speed
- Fast closing and quiet landing
- Lifelong 'Confident Close' performance



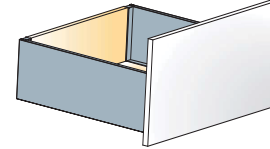
## Intuitive installation

- Easy and quick assembly with less parts
- Repeatable assembly and disassembly possible
- EasyFix front panel connector for tool-free insertion and quarter-turn lock



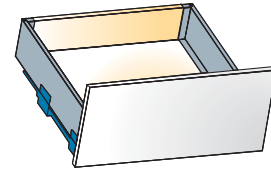
## Expanded tolerances

- Precise drawer alignment
- Improved drawer stability in open position
- Smooth and silent operation



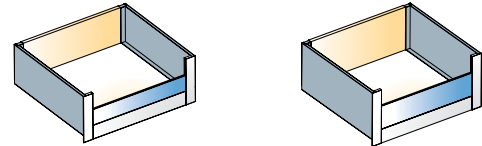
## Elegant design with customisable flexibility

- Choose from white or anthracite drawer finishes and solid or glass sides
- Same drilling patterns as Tekform DWD for a truly homogeneous drawer platform



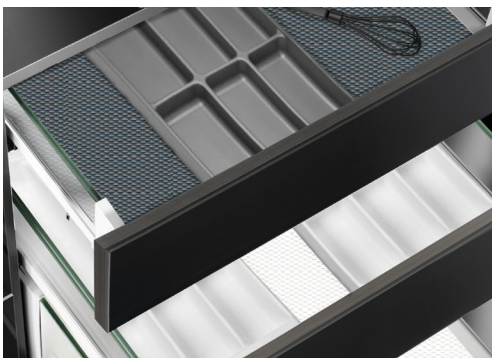
## Glass front inner drawers

- Ideal for wardrobe applications
- Create consistency in your kitchen and maximise useable space by substituting pull-out pantry units with slimline inner drawers



## Technical Details

Drawer runner type	Full extension
Load capacity	40kg
Minimum height space required	115mm
Wooden back panel thickness	16mm
Wooden bottom panel thickness	16mm
Side adjustment	+/- 1mm
Height adjustment	+/- 2mm
Drawer heights	70mm, 100mm, 145mm, 182mm
Drawer lengths	270mm, 350mm, 400mm, 450mm, 500mm, 550mm
Finishes	White, anthracite grey
Front connectors	EasyFix, screw-in



- Optional modular cutlery tray organisation accessories
- Available with rigid non-slip drawer matt in white or anthracite
- Titus damper inside for consumer preferred 'Confident Close'

## Slimline Glass SDWDG

8mm tempered glass sides

Interchangeable runner system with the **Tekform DWD** and **Tekform Slimline** drawers for a unified drawer system.

