



T-type Hinge

2019

Important Information

Technical information

While every effort has been made in the production of this catalogue to ensure the accuracy of information, our products are continually being revised and users should confirm the up to date specification before ordering. Due to constant improvement of products presented in the catalogue, we can make changes at any time and without notice.

Responsibility

It is the responsibility of the user to ensure the fitness of hardware for the intended purpose. We recommend assessment by appropriate testing in the application and by technical enquiry to our representatives.

Intellectual property

Titus Group owns the intellectual property rights in its products worldwide whether as trademarks, patents, intellectual, copyright, designs, illustrations, drawings and the 'know how' contained in their design and production. Titus Group respects the equivalent rights in competitors and all other relevant product design rights. To our knowledge our products do not infringe any intellectual property rights of competitors or other parties. Titus Group takes infringements of its rights seriously and will rigorously defend these rights to the full extent of the law.

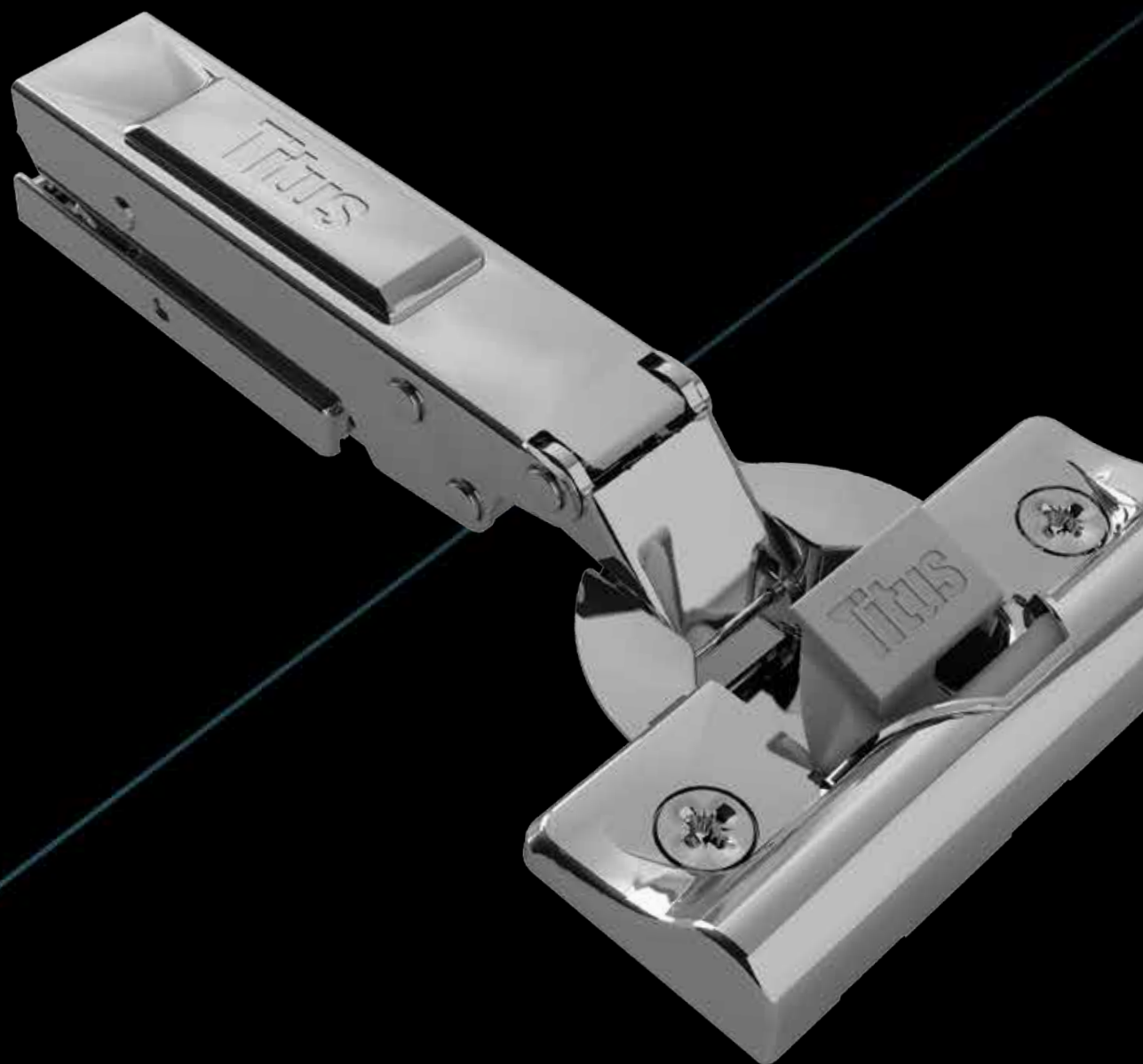
***Non preferred articles**

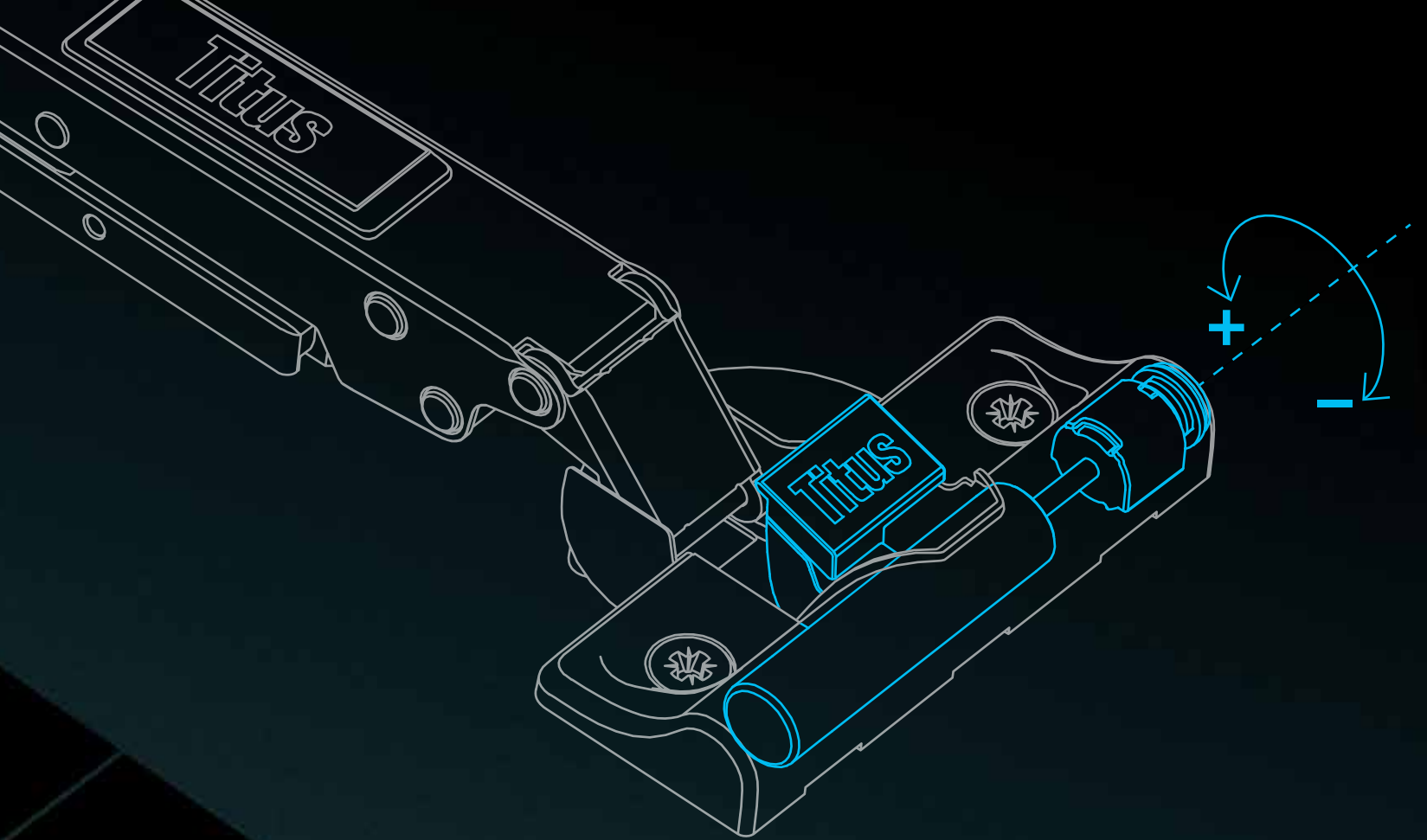
All Item numbers in the catalogue marked with * are for non preferred items available on extended delivery times.

Trademarks

Titus and Titusonic are registered trademarks of Titus International Ltd. Lama is a registered trademark of Titus d.o.o. Dekani, WoodWelding is a registered trademark of WW SA.

Titus Hinges





'ConfidentClose'

The hinge is designed to deliver consumer preferred soft closing motion.

- Fast closing
- Late start of deceleration action
- Quiet landing with 'SoftTouch'

Based on third party consumer research.

'One-for-All'

- Damping on the hinge cup
- Positioning of dampers transverse to the hinge cup allows for consistent damping across hinge variations
- Universal mounting plate for both damped and non-damped hinges

Adjustable Damping

Flexibility to tune performance to a wide range of applications

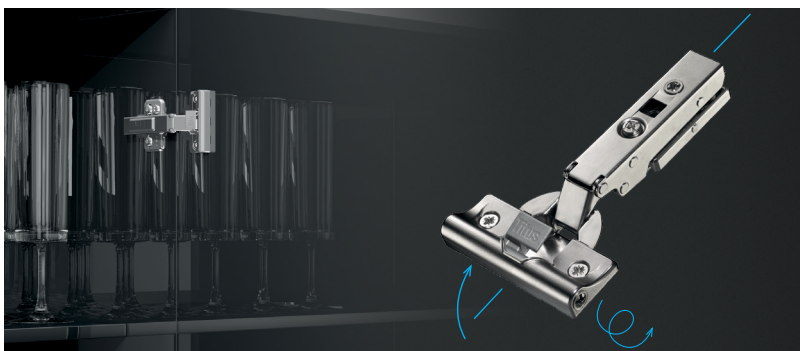
- Consistent performance over a wide range of doors of different sizes and weights
- Easy accessible button for intuitive and quick adjustment

Titus Damper Inside

- Efficient damping at any closing speed
- Reliable closing
- Damping force consistency

A new generation hinge

T-type hinge



Titus New Generation hinge for quick furniture assembly and consistent performance on a wide range of doors

'3Way' snap-on mounting
 Highly tolerant
 Adjustable damping
 'ConfidentClose'

Numerous application possibilities

- For simpler cabinet design
- For demanding high quality furniture of larger heights and weights

Opening angle	Door thickness	Crankings	Door tab K	Mounting mode	Mounting plate type	Mounting plate height	Soft closing options	Durability (cycles)	Page
110° 170°	15-26mm	0mm 9mm 17mm angled	3-6mm	'3Way' snap-on	Cruciform Linear	0mm 1mm 2mm 3mm	Damping integrated in the hinge cup Glissando add-on or stand-alone damping solutions	100,000	2.24

Concealed Hinges

Product Guide

T-type

				Page
T-type Glissando 110	0mm	110°	For wooden doors	2.24
	9mm	110°	For wooden doors	2.26
	17mm	110°	For wooden doors	2.26
T-type Glissando 110/45°	45°, 17mm	110°	For wooden doors	2.28
T-type Glissando 110/90°	90°, 17mm	110°	For wooden doors	2.30
T-type 110	0mm	110°	For wooden doors	2.32
	9mm	110°	For wooden doors	2.34
	17mm	110°	For wooden doors	2.34
T-type 110/45°	45°, 17mm	110°	For wooden doors	2.36
T-type 110/90°	90°, 17mm	110°	For wooden doors	2.38
T-type 170	0mm	170°	For wooden doors	2.40
	9mm	170°	For wooden doors	2.40
T-type Pie-cut Corner Cabinet		110°	For wooden doors	2.42
T-type Mounting Plates				2.44

S-type

S-type Plus 110	0mm	110°	For wooden doors	2.48
	9mm	110°	For wooden doors	2.48
S-type 110	0mm	110°	For wooden doors	2.50
	9mm	110°	For wooden doors	2.50
	15mm	110°	For wooden doors	2.50
S-type 110/45°	45°, 18mm	110°	For wooden doors	2.52
S-type 110/90°	90°, 18mm	110°	For wooden doors	2.54
S-type 170°	0mm	165°	For wooden doors	2.56
S-type Pie-cut Corner Cabinet			For wooden doors	2.58

S-type Mounting Plates	2.60
------------------------	------

B-type

B-type Ø35 Shallow Cup	0mm	108°	For wooden doors	2.64
------------------------	-----	------	------------------	------

General Hinges

Butt Hinge	2.66
------------	------

Other Hinges	2.67
--------------	------

Accessories

Push Latch	2.68
------------	------

Push to Open Catches	2.68
----------------------	------

Cover Caps	2.70
------------	------

Soft Closing Systems

	Mounting	Compatibility	Opening Angle	Page
Information				2.71
Glissando TT	Add-on	T-type	110°	2.82
Glissando TL	Add-on	S-type, B-type	110°	2.84
Glissando TL 170	Add-on	T-type, S-type, B-type	170°	2.86
Glissando CR	Stand alone	T-type, S-type, B-type	110°, 120°, 170°	2.88
Titusoft WD	Stand alone	For wooden drawers		2.90
Titusoft MD	Stand alone	For metal drawers		2.92

Concealed Hinges

Door Overlay

How to Achieve the Desired Door Overlay

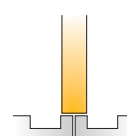
Choose the hinge of appropriate cranking

Concealed hinges with specific hinge arms are available for different door overlays. The most common overlays are:

■ Cabinet side
■ Door



- 1. Full overlay**
Use a hinge with 0mm cranking



- 2. Partial overlay for double doors**
Use a hinge with 5mm or 9mm cranking

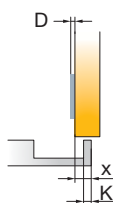


- 3. Inset door**
Use a hinge with 15mm or 17mm cranking

Choose the mounting plates of appropriate thickness

To achieve the desired overlay (x) while using a determined drilling distance (K), a mounting plate of appropriate

thickness (D) must be chosen from the enclosed table or calculated with the given formula.

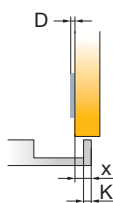


x	4	5	6	7	8	9
3	3	2	1	0		
K 4		3	2	1	0	
5			3	2	1	0
						D

$D=4+K-x$

Choose the appropriate drilling distance (K)

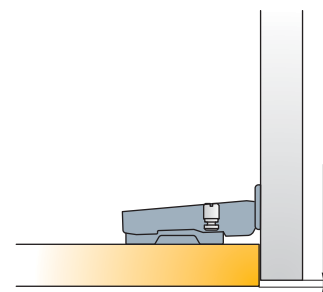
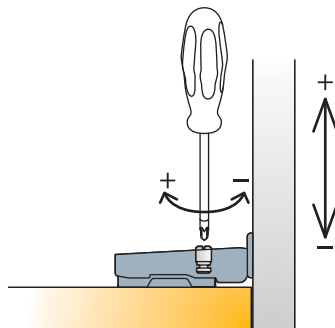
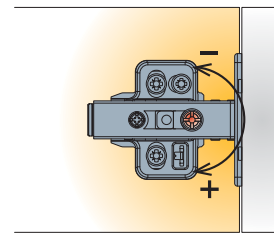
To achieve the desired door overlay (x) while using a determined mounting plate thickness (D), an appropriate drilling distance (K) must be chosen.



x	4	5	6	7	8	9
0				3	4	5
1			3	4	5	
D 2		3	4	5		
3	3	4	5			
						K

Through side adjustment

The side adjustment is made by rotating the appropriate screw on the hinge arm.

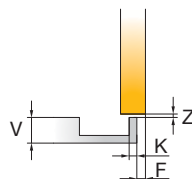


Adjustment range

Door clearance and gap

The door clearance ($F \geq F_{min}$) and gap (Z) represent the minimal necessary space needed for the correct opening and closing of the door. The minimal required values depend on the cup drilling distance (K), door thickness (V).

and the type of hinge. The minimum clearance scale can be found on product pages > see Door (page) clearance chart. When using hinges with partial overlay the door clearance must be twice as large ($F \geq 2F_{min}$).



V	16	17	18	19	20	21	22
3	0.3	0.5	0.7	1.0	1.3	1.7	2.5
K 4	0.3	0.5	0.7	0.9	1.2	1.6	2.1
5	0.3	0.5	0.7	0.9	1.2	1.5	2.0 F_{min}

Gap $Z_{min}=0$

Concealed Hinges

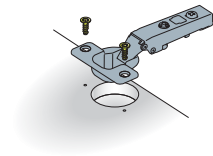
Hinge Cup Types

How to Mount the Hinge on the Door

There are cup type symbols listed on product pages beside item numbers. Below you can find their explanation.

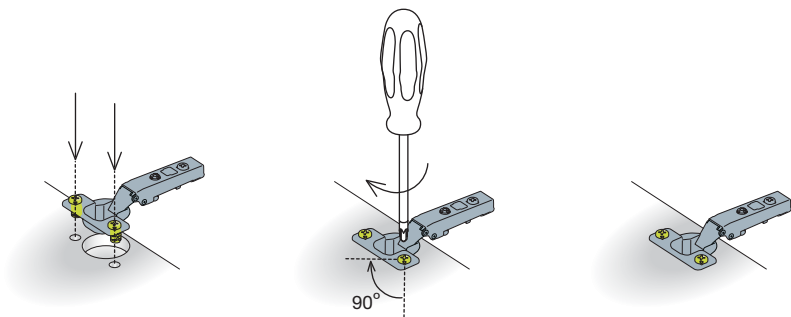
No pre-mounting

The hinge is fixed on the door with two screws. 3mm pilot holes recommended.



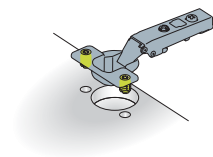
'EasyFix' time saving system

Quarter turn fixing for 8mm holes (interaxis 45/9.5) or 10mm holes (interaxis 48/6 and 52/5.5).



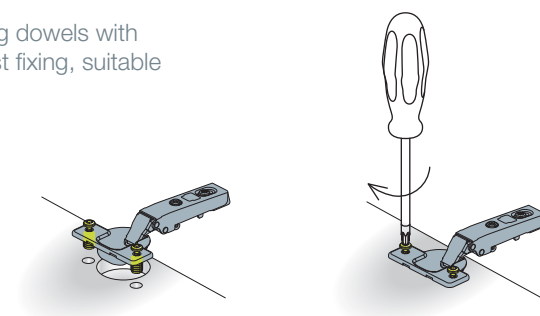
Machine insertion ready hinge cup

Pre-mounted dowels suitable for machine insertion into 8mm holes (interaxis 45/9.5) or 10mm holes (interaxis 48/6 and 52/5.5).



Pre-mounted expando dowels

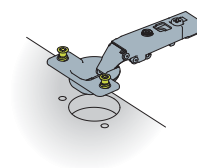
Pre-mounted expanding dowels with triple-start screw for fast fixing, suitable for 8mm holes.





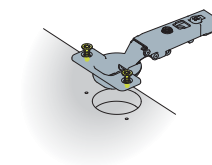
Hinge cup with pre-mounted euro screws

Pre-mounted euro screws for 5mm holes. Where not specified otherwise, euro screws are 13mm long.



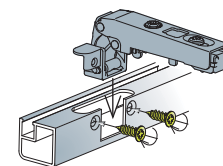
Hinge cup with pre-mounted chipboard screws

Pre-mounted chipboard screws. 3mm pilot holes recommended.



Aluminium frame screw-on hinge cup

The hinge is fixed onto a specific drilling on the aluminium frame.



Concealed Hinges

Boring Details

Drilling Patterns for Hinge Cup

Interaxis
45mm, 48mm* and 52mm

- T-type
- S-type
- B-type

*Available on special request → see page 0.3

	Interaxis 45mm	Interaxis 48mm	Interaxis 52mm
Hinge cup type	Drilling pattern	Drilling pattern	Drilling pattern
 Screw-on ready Premounted chipboard screws			
 Machine insertion ready Premounted expando dowels EasyFix system			
 Premounted euro screws			

Interaxis is the distance between two holes for fixing screws on the hinge cup.

Concealed Hinges

Mounting Plate Type

How to Fix the Mounting Plate on the Cabinet Side

There are mounting plate type symbols listed on product pages beside item numbers. Below you can find their explanation.



No premounting, chipboard screw ready

The mounting plate is fixed with two chipboard screws or equivalent. 3mm pilot holes recommended.



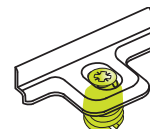
No premounting, euro screw ready

Fixing with 6.3mm euro screws into pre-drilled 5mm holes. Choosing the appropriate head and length for use with this mounting plate is recommended.



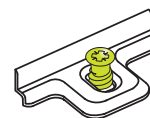
Machine insertion ready

Premounted dowels for machine insertion into 10mm holes.



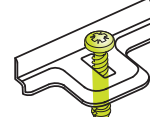
Premounted euro screws

Euro screws for 5mm holes are premounted on the mounting plate. Available lengths: 11mm, 13mm and 15mm.



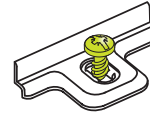
Premounted expanding dowels

Premounted expanding dowels for 5mm holes. Available lengths: 7.5mm and 10.5mm.



Premounted chipboard screws

The mounting plate is fixed with two premounted chipboard screws. 3mm pilot holes recommended.



Concealed Hinges

Hinge-to-plate Mounting

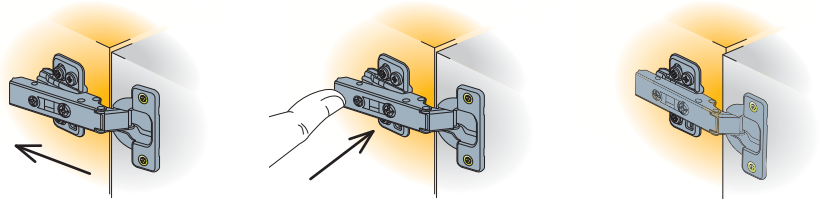
How to Assemble the Hinge and the Mounting Plate

T-type
'3Way' snap-on

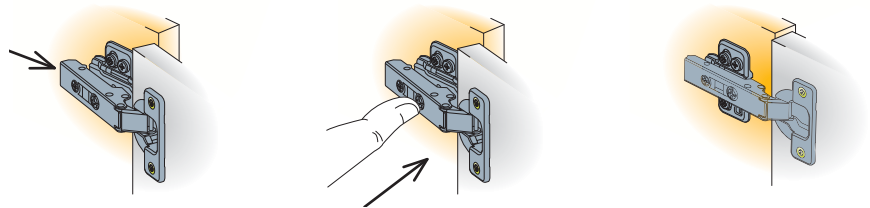
'3Way' snap-on mounting for intuitive hinge-to-plate assembly in three directions:

- from the hinge arm front
- from the hinge arm rear
- from the top

Front assembly



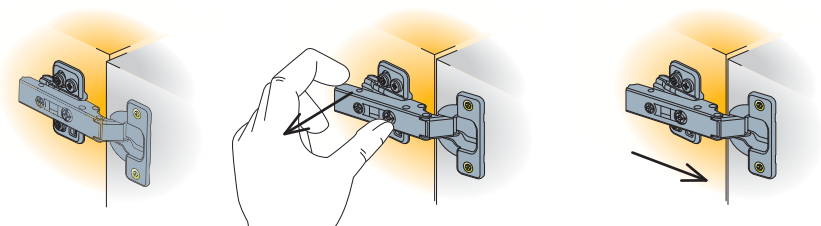
Rear assembly



Top assembly



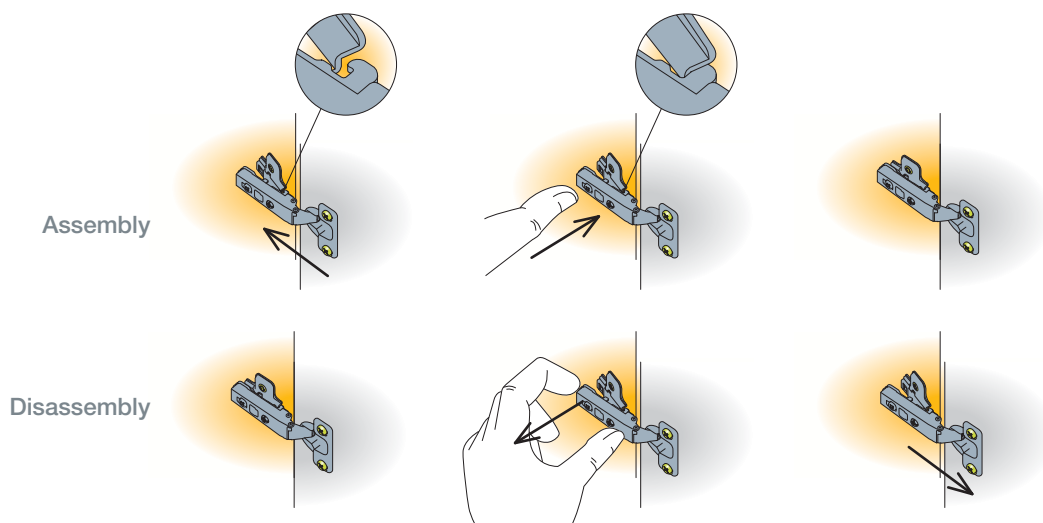
Disassembly:
For disassembly press rear button on the hinge arm.



S-type snap-on

The door is assembled on the cabinet side simply by positioning the two hooks under the hinge arm on the outer part of the mounting plate and pressing gently on the rear part of the hinge arm.

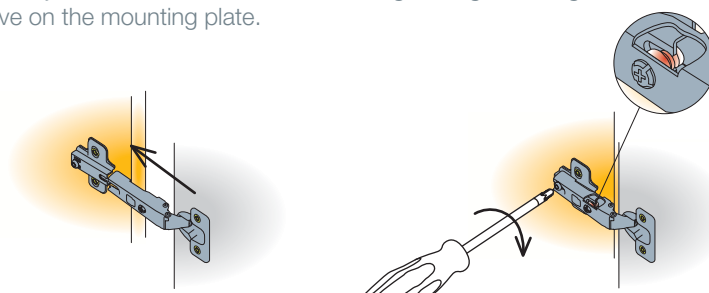
For disassembly, press the rear button on the hinge arm.



B-type slide-on

The hinge is assembled by sliding the hinge arm over the mounting plate. The hinge adjustment screw must fit into the groove on the mounting plate.

After adjusting the door depth, the mounting procedure is finished by tightening the fixing screw.

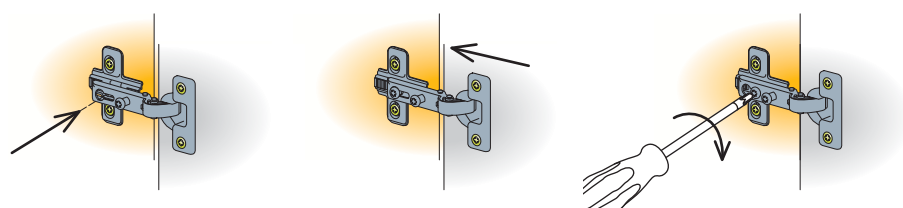


Key-hole

· *Wide Angle hinge

The hinge is assembled on the mounting plate by inserting the fixing screw on the appropriate hole on the hinge arm.

After adjusting the door depth, the mounting procedure is finished by tightening the fixing screw.



Concealed Hinges

Loadings



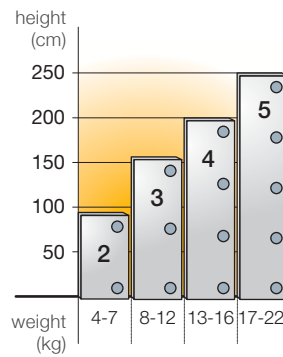
Use the appropriate number of hinges so that the door height or weight does not exceed that shown below.

How Many Hinges per Door?

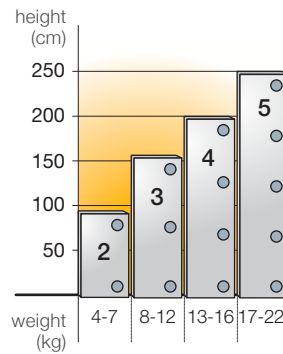
Check the enclosed specifications for the number of required hinges per door by considering door height and weight.

Concealed hinges with Ø35mm hinge cup diameter

- T-type
- S-type
- B-type
- Other hinges



- T-type Glissando



Note:

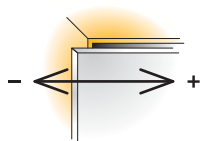
Hinges with integrated damping can be combined with non-damped hinges from standard hinge range. A trial mounting is always recommended.

Concealed Hinges Adjustment



Adjustment range can be found on the product pages.

Side Adjustment

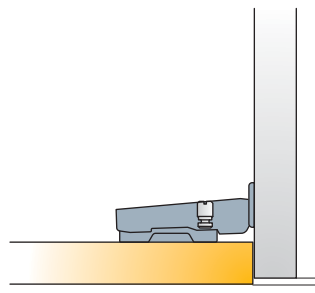
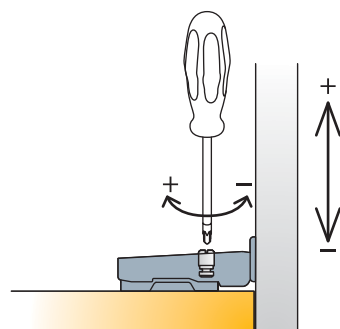
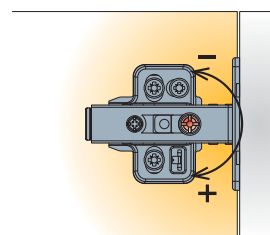


The side adjustment aligns the door with the side of the cabinet.

Rotate the appropriate screw

- T-type
- S-type
- B-type

The side adjustment is made by rotating the screw on the hinge arm.



Adjustment range

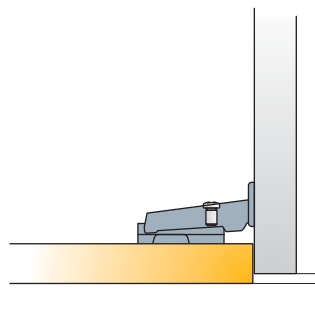
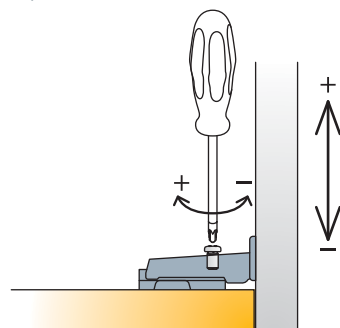
By temporarily loosening the fixing screw

- *Wide Angle hinge

For the side adjustment:

1. Release the fixing screw
2. Make the necessary adjustment by rotating the appropriate screw
3. Tighten the fixing screw

Without releasing the fixing screw no side adjustment is possible.

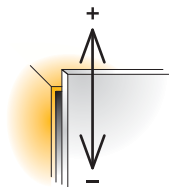


Adjustment range

Concealed Hinges

Adjustment

Height Adjustment

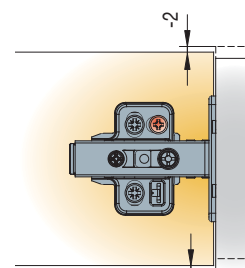
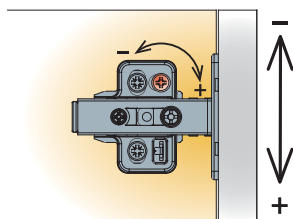


Height adjustment is necessary to achieve optimal vertical door position.

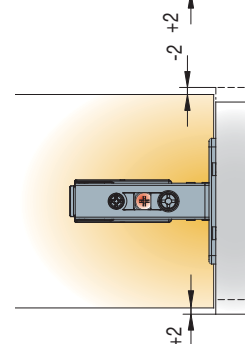
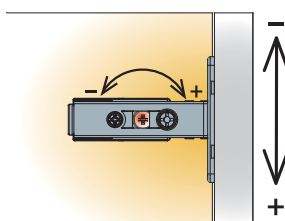
Rotate the cam adjuster

The height adjustment is made by rotating the cam adjuster on the mounting plate.

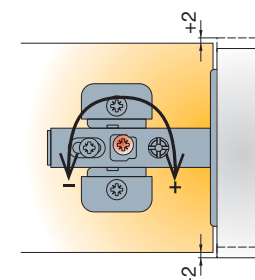
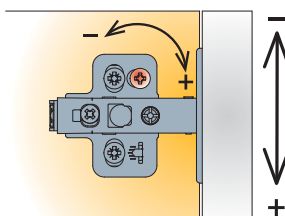
- T-type with cam adjustable cruciform mounting plate



- T-type with cam adjustable linear mounting plate



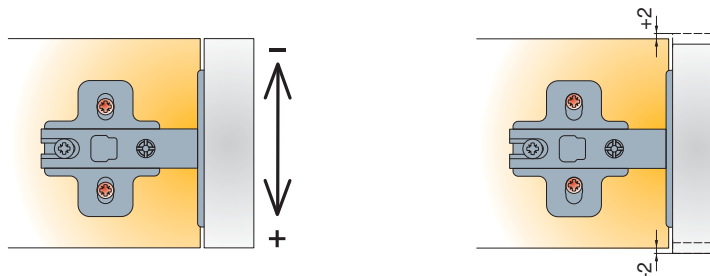
- S-type with cam adjustable cruciform mounting plate



Releasing the screw slot

- T-type and S-type with cruciform mounting plate
- B-type
- *Wide Angle hinge

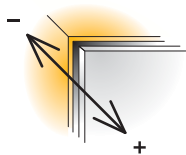
For height adjustment the two mounting plate fixing screws have to be temporarily released while making the manual adjustment.



Concealed Hinges

Adjustment

Depth Adjustment

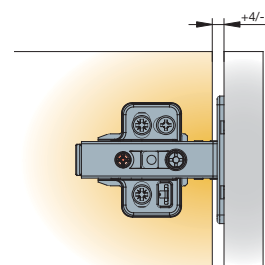
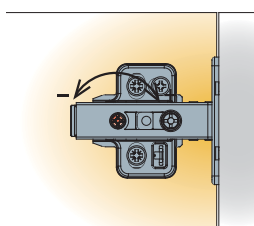


The system enables easy adjustment of the gap between door and cabinet.

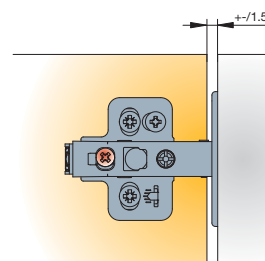
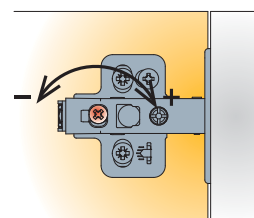
Rotating the cam adjuster

Rotate the cam adjuster on the hinge arm.

· T-type



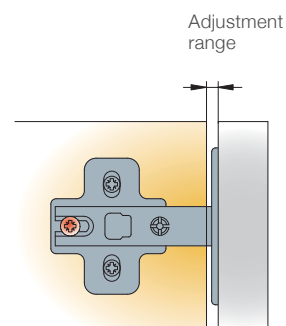
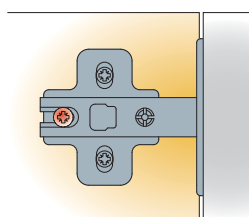
· S-type Plus



Release the fixing or adjustment screw

The depth adjustment is made by temporarily releasing the adjustment screw (S-type) or fixing screw (B-type, Hinge Ø40). After the adjustment is made the screw has to be re-tightened.

· S-type
· B-type



**Titus
recommends!**

Most of Titus hinges can be combined
with soft closing devices.
→ see page 2.71 for details

Door Closing Type

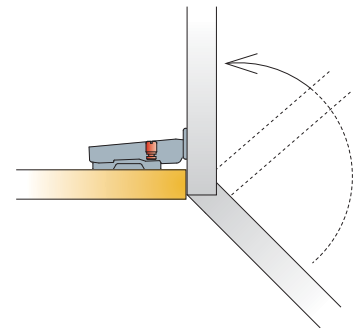
There are two door
closing systems:

self closing ←
free swinging -----

Concealed hinges with self-closing angle

- T-type
- S-type
- B-type

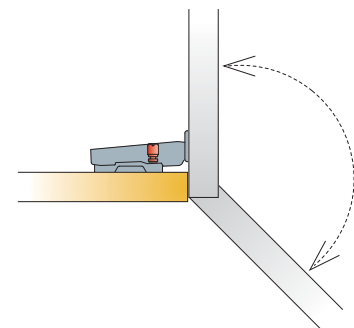
The self-closing angle is the point
from which the door will close by
itself, without user assistance. The
mechanism starts closing the door from
a 14° to 25° angle, depending on the
concealed hinge type. From that point
to the maximum opening angle the door
remains in an open position.



Free-swinging door hinges*

Optionally most of Titus concealed
hinges can be supplied without the self-
closing mechanism. These hinges may
be ordered upon request. Soft closing
devices can not be used with free-
swinging door hinges.

** Available upon special request, speak to your
Technical Sales Representative.*



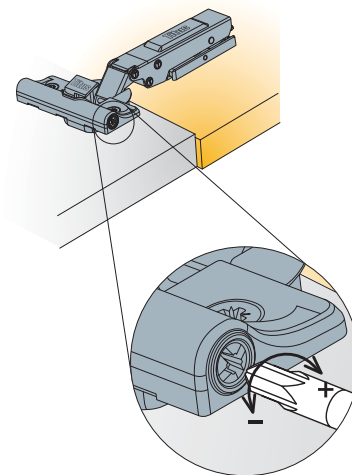
Concealed Hinges Adjustment

Damping Adjustment

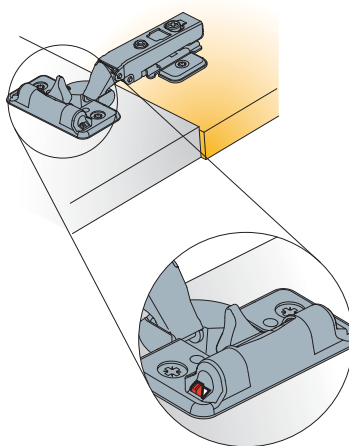
T-type Glissando

The damping action can be adjusted to fit different door weights and sizes which enables perfect door functioning.

Damping is factory pre-set to the medium damping value. Turn towards '+' to increase and '-' to decrease the damping.

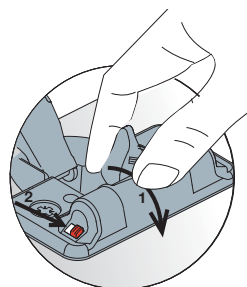


S-type-i Plus series S-type-i series B-type-i series

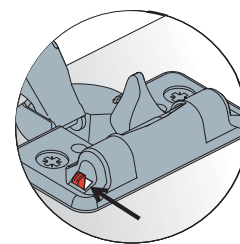


The damping reduction switch in a pre-set position.

To decrease or to increase the damping, change the position of the damping reduction switch. Hinges are factory pre-set to the maximum damping value.



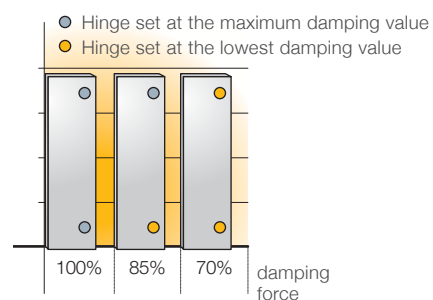
To decrease the damping
1. Lift the damping activator.
2. Slide the damping reduction switch to opposite position.



To increase the damping, slide the damping reduction switch back to the factory pre-set position.

Damping force change

The damping reduction switch adjusts the damping. Example shows the damping change in case of two hinges on door.

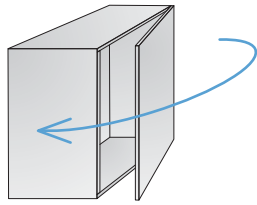


Key Design Choices

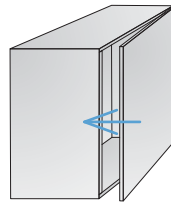
'ConfidentClose'

The hinge is designed to deliver consumer-preferred soft closing motion.

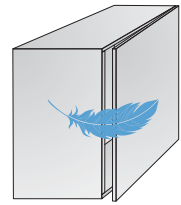
Based on results of third party research



Fast closing



Late start of deceleration action

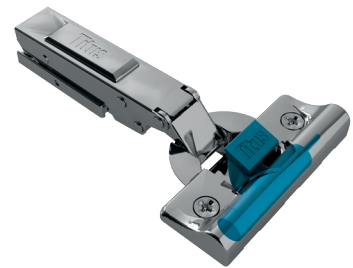


Quiet landing with 'SoftTouch'

'One-for-all' efficiency principle

Positioning of damper transversal to the hinge cup allows for consistent damping across hinge variations.

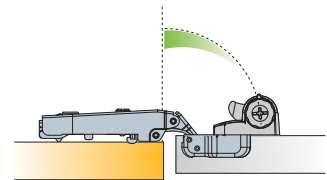
Universal mounting plate platform for both damped and non-damped hinges.



Adjustable damping

Flexibility to tune performance for all applications.

- Consistent performance over a wide range of doors of different sizes and weights
- Easy, accessible adjustment button for intuitive and quick adjustment



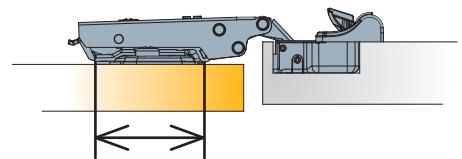
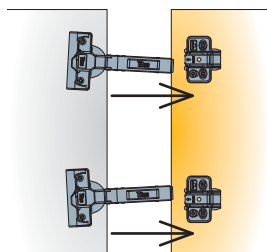
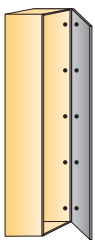
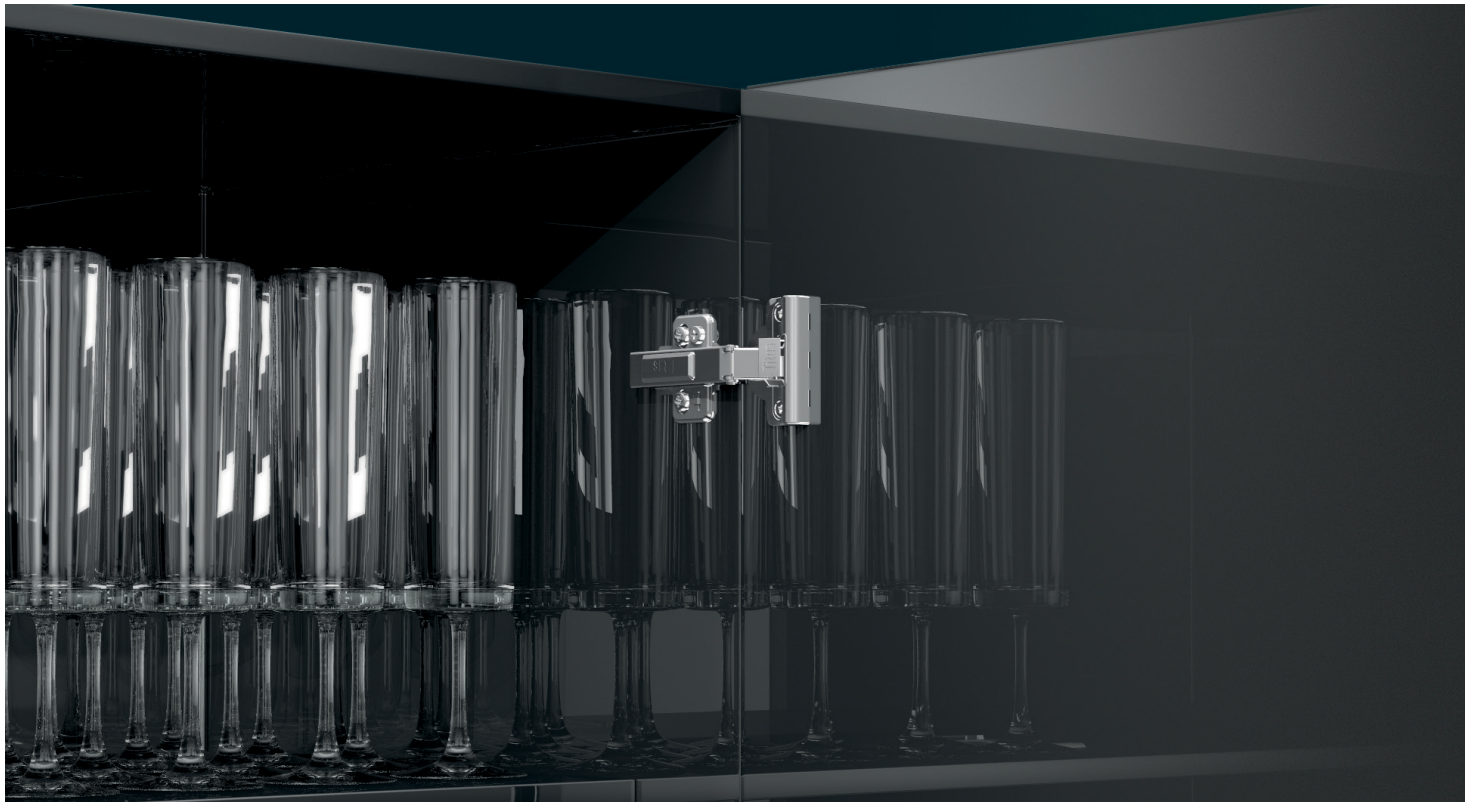
Adjustable damping zone and force

Titus Damper inside

- Efficient damping at any closing speed
- Reliable closing
- Damping force consistency



T-type Hinges



Easy door installation even in cases of 4-5 hinges per door

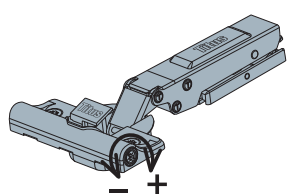
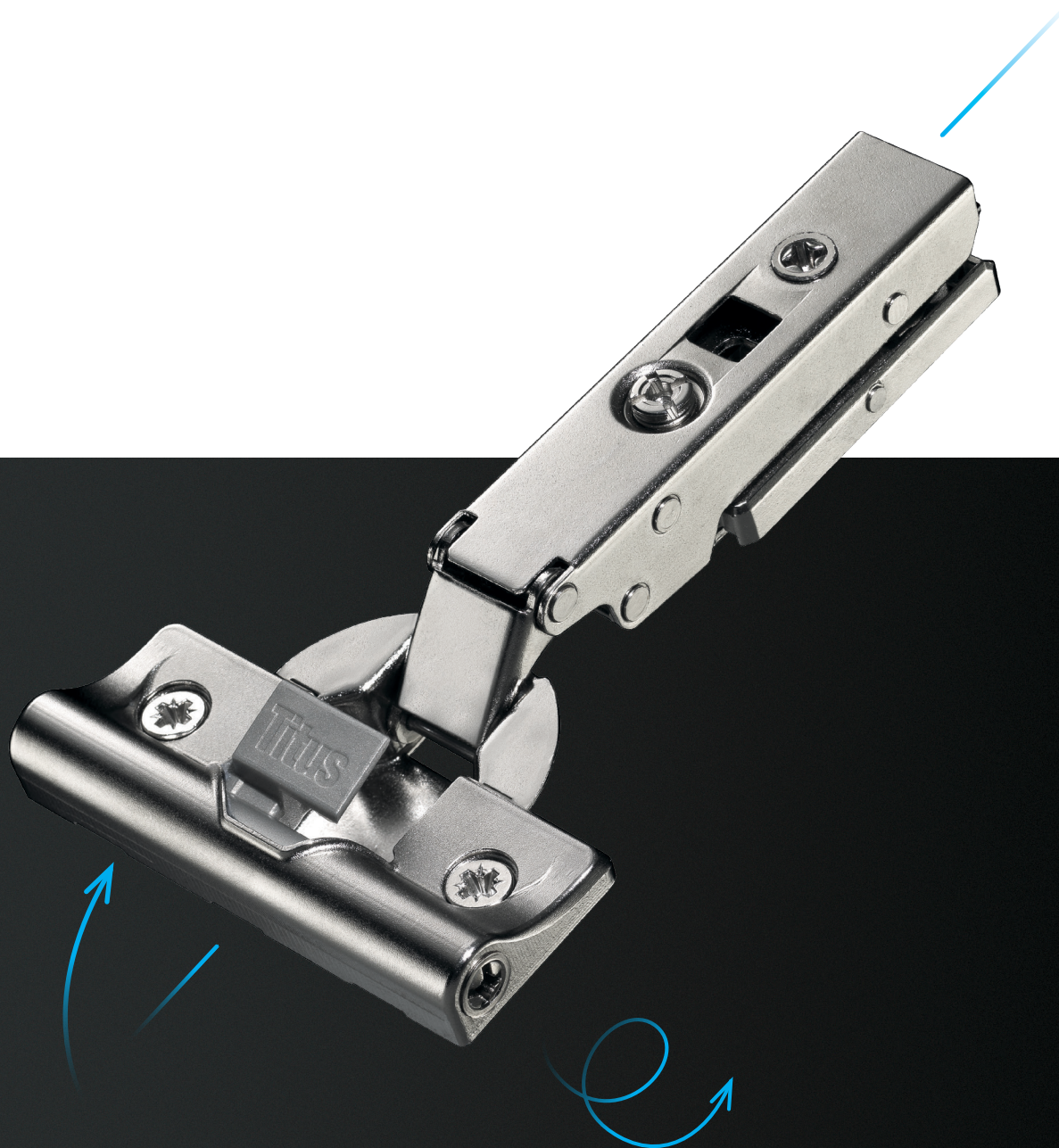
- Easy and quick assembly and disassembly
- Flexibility for the furniture user
- Tight hinge-to-plate joint improves hinge stability and reduces door sag

Highly tolerant

- Efficient performance in marginal values of tolerance
- Reliable door closing in case of accidental misalignment
- 'ConfidentClose' assured

Rigidity

- Hinge-to-plate attachment assures stability and rigidity
- Smooth performance



Adjustable damping

- Consistent performance on doors of different dimensions and weights
- Intuitive adjustment procedure



'Titus Damper Inside'

- Titus proprietary multi-purpose damping technology
- Reliable and consistent life-long damping
- No rebound

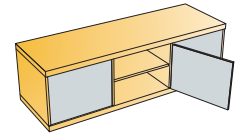
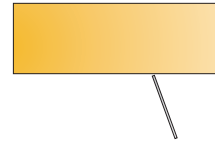
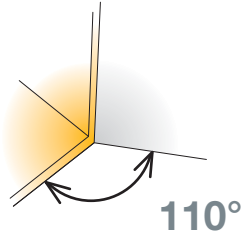


Proven Glissando concept

- Damper is positioned transversal on the hinge cup
- Reliable performance

T-type Glissando 110

For wooden doors



- Opening angle
- Drilling diameter for hinge cup
- Drilling depth
- Hinge on plate mounting system

110°
35mm
11.7mm
'3Way' snap-on

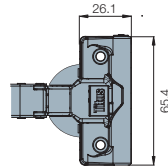
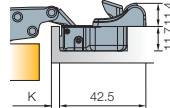
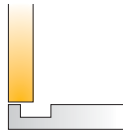


Technical details

	Interaxis 45mm	Interaxis 52mm
Cup type	Item number	Item number
	701.0AT0.054.00	
	701.0AT1.054.00	701.0AP1.054.00
	701.0AT4.054.00	701.0AP4.054.00
Drilling patterns for hinge cups → see page 2.12		

Cranking

0mm



Made of steel

Mounting plates



Cam adjustable cruciform mounting plate
→ see page 2.44

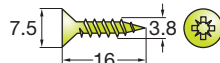


Cruciform mounting plate
→ see page 2.46



Cam adjustable linear mounting plate
→ see page 2.44

Hinge cup screws If not premounted



611.8K16.338.016
1,000 pcs

Accessories



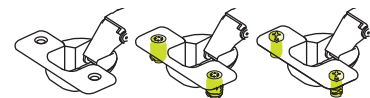
Cover caps for hinge arm
→ see page 2.70

Legend of hinge cup symbols

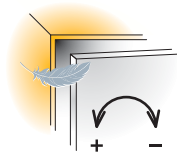
Screw-on ready
← screws

Machine insertion ready

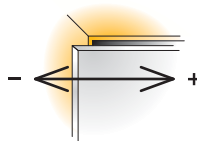
EasyFix system



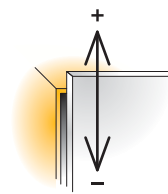
Damping adjustment



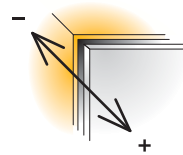
Door adjustment



Side adjustment
+3/-1 mm



Height adjustment
+2/-2 mm

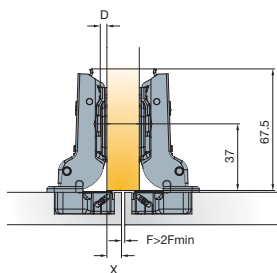
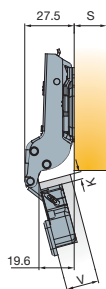


Depth adjustment
+4/-1 mm

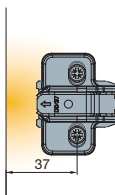
For further explanation → see page 2.22

For further explanation → see pages 2.17-2.20

Mounting details



Drawings show application on D=0mm thick mounting plate



Mounting plate drilling distance

Mounting plate thickness table

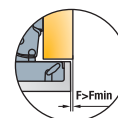
For further explanation → see page 2.8

x	4	5	6	7	8	9	10
3	3	2	1	0			
4	4	3	2	1	0		
5		4	3	2	1	0	
6			4	3	2	1	0

$D=4+K \cdot x$

Door clearance at R=1mm

For further explanation → see page 2.8

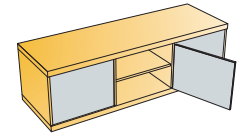
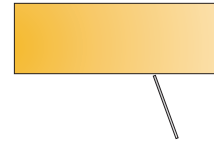
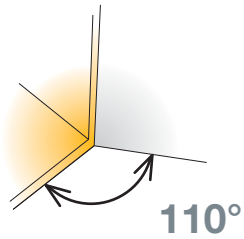


V	16	17	18	19	20	21	22	23	24	25	26
3	0.5	0.7	0.8	1	1.2	1.5	1.7	2.1	2.8	4.1	5.5
4	0.4	0.7	0.8	1	1.2	1.5	1.7	2.1	2.3	3.1	4.5
5	0.4	0.6	0.7	0.9	1.1	1.4	1.6	2	2.2	2.6	3.5
6	0.4	0.6	0.7	0.9	1.1	1.4	1.6	2	2.2	2.6	2.9

Gap $Z_{MIN}=0$

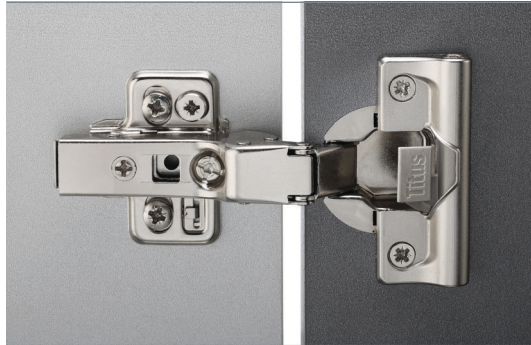
T-type Glissando 110

For wooden doors



- Opening angle
- Drilling diameter for hinge cup
- Drilling depth
- Hinge on plate mounting system

110°
35mm
11.7mm
'3Way' snap-on

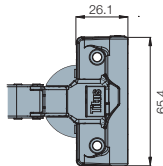
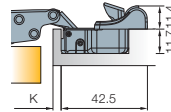
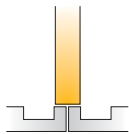


Technical details

	Interaxis 45mm	Interaxis 52mm	
Cup type	Item number	Item number	
	701.0CT0.054.00		
	701.0CT1.054.00	701.0CP1.054.00	
	701.0CT4.054.00	701.0CP4.054.00	
Drilling patterns for hinge cups → see page 2.12			
		701.0DT0.054.00	
		701.0DT1.054.00	701.0DP1.054.00
		701.0DT4.054.00	701.0DP4.054.00
Drilling patterns for hinge cups → see page 2.12			

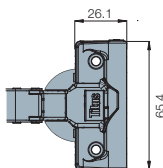
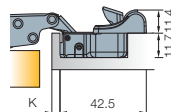
Cranking

9mm



Cranking

17mm



Made of steel

Mounting plates



Cam adjustable cruciform mounting plate
→ see page 2.44

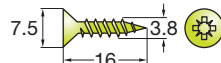


Cruciform mounting plate
→ see page 2.46



Cam adjustable linear mounting plate
→ see page 2.44

Hinge cup screws
If not premounted



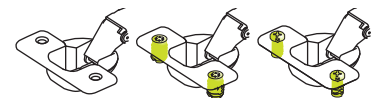
611.8K16.338.016
1,000 pcs

Accessories

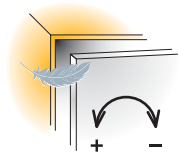


Cover caps for hinge arm
→ see page 2.70

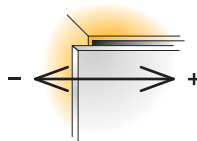
Legend of hinge cup symbols



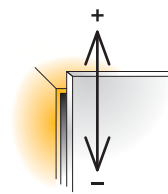
Damping adjustment



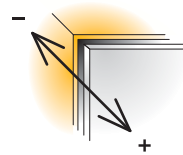
Door adjustment



Side adjustment
+3/-1mm



Height adjustment
+2/-2mm



Depth adjustment
+4/-1mm

For further explanation → see page 2.22

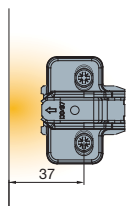
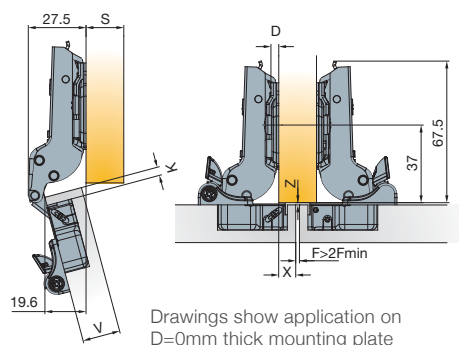
For further explanation → see pages 2.17-2.20

Mounting details

Mounting plate drilling distance

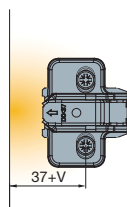
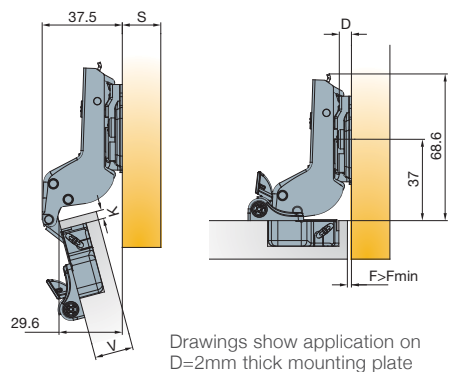
Mounting plate thickness table

For further explanation → see page 2.8



x	4	5	6	7	8	9	10
3	3	2	1	0			
4	4	3	2	1	0		
5		4	3	2	1	0	
6			4	3	2	1	0

$D=4+K-x$

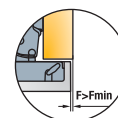


V	16	17	18	19	20	21	22	23	24
3	0	0	0	0	1	1	1	1	2
4	1	1	1	1	2	2	2	2	3
5	2	2	2	2	3	3	3	3	4
6	3	3	3	3	4	4	4	4	D

$D=4+K+F$

Door clearance at R=1mm

For further explanation → see page 2.8

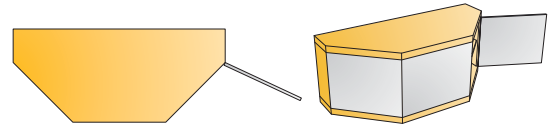
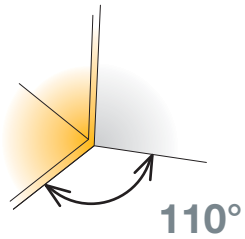


V	16	17	18	19	20	21	22	23	24	25	26
3	0.5	0.7	0.8	1	1.2	1.5	1.7	2.1	2.8	4.1	5.5
4	0.4	0.7	0.8	1	1.2	1.5	1.7	2.1	2.3	3.1	4.5
5	0.4	0.6	0.7	0.9	1.1	1.4	1.6	2	2.2	2.6	3.5
6	0.4	0.6	0.7	0.9	1.1	1.4	1.6	2	2.2	2.6	2.9

Gap $Z_{MIN}=0$

T-type Glissando 110/45°

45° angled application for wooden doors



- Opening angle 110°
- Drilling diameter for hinge cup 35mm
- Drilling depth 11.7mm
- Hinge on plate mounting system '3Way' snap-on

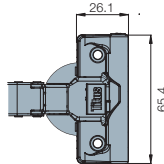
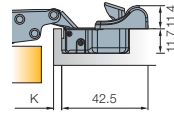
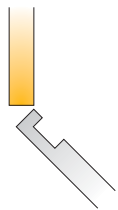


Technical details

	Interaxis 45mm	Interaxis 52mm
Cup type	Item number	Item number
	701.0B08.054.00	
	701.0C54.650.00	701.0C58.650.00

Cranking

17mm



Drilling patterns for hinge cups →
see page 2.12

Cup made of steel, arm made of zinc

Mounting plates



Cam adjustable cruciform mounting plate
→ see page 2.44

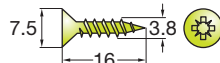


Cruciform mounting plate
→ see page 2.46



Cam adjustable linear mounting plate
→ see page 2.44

Hinge cup screws If not premounted



611.8K16.338.016

1,000 pcs

Accessories

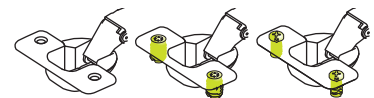


Cover caps for hinge arm
→ see page 2.70

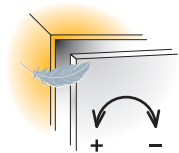
Legend of hinge cup symbols

Screw-on ready
← screws

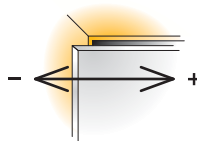
EasyFix system



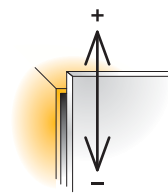
Damping adjustment



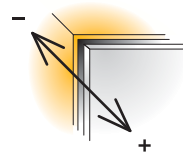
Door adjustment



Side adjustment
+3/-1mm



Height adjustment
+2/-2mm



Depth adjustment
+2.5/-2.5mm

For further explanation → see page 2.22

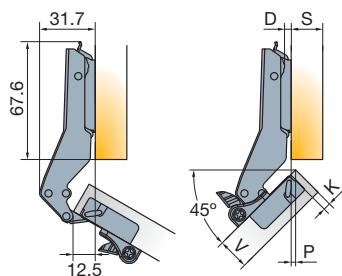
For further explanation → see pages 2.17-2.20

Mounting details

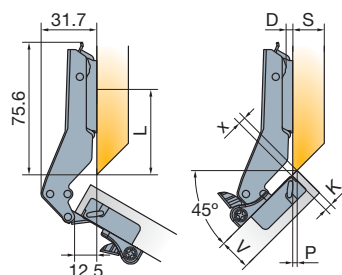
Mounting plate drilling distance

Mounting plate thickness table

For further explanation → see page 2.8



Drawings show application on D=0mm thick mounting plate



Drawings show application on D=0mm thick mounting plate

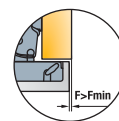
L=45 for thickness D=0
L=44 for thickness D=1
L=43 for thickness D=2
L=42 for thickness D=3
L=41 for thickness D=4

P	0	0.5	1	1.5	2	2.5	3	3.5	4
3		2		1		0			
4	3		2		1		0		
5		3		2		1		0	
6	4		3		2		1		0 D

X	0	0.5	1	1.5	2	2.5	3	3.5	4	4.5	5	6
3	2			1			0					
4			2			1			0			
5		3			2			1			0	
6	4			3			2			1		0 D

Door clearance at R=1mm

For further explanation → see page 2.8

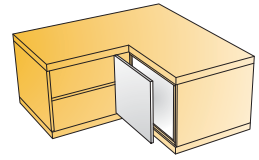
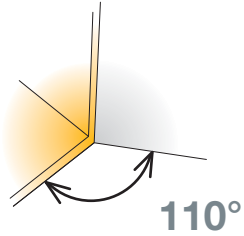


V	16	17	18	19	20	21	22	23	24	25	26
3	0.5	0.7	0.8	1	1.2	1.5	1.7	2.1	2.8	4.1	5.5
4	0.4	0.7	0.8	1	1.2	1.5	1.7	2.1	2.3	3.1	4.5
5	0.4	0.6	0.7	0.9	1.1	1.4	1.6	2	2.2	2.6	3.5
6	0.4	0.6	0.7	0.9	1.1	1.4	1.6	2	2.2	2.6	2.9 F _{MIN}

Gap Z_{MIN}=0

T-type Glissando 110/90°

For wooden door cabinets with blind panels



- Opening angle
- Drilling diameter for hinge cup
- Drilling depth
- Hinge on plate mounting system

110°
35mm
11.7mm
'3Way' snap-on

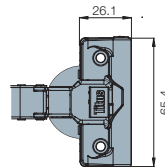
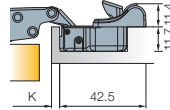


Technical details

	Interaxis 45mm	Interaxis 52mm
Cup type	Item number	Item number
	701.0A96.054.00	
	701.0D36.054.00	701.0D40.650.00
	701.0D30.650.00	701.0D34.650.00
Drilling patterns for hinge cups → see page 2.12		

Cranking

17mm



Cup made of steel, arm made of zinc

Mounting plates



Cam adjustable cruciform mounting plate
→ see page 2.44

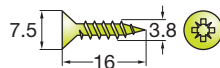


Cruciform mounting plate
→ see page 2.46



Cam adjustable linear mounting plate
→ see page 2.44

Hinge cup screws If not premounted



611.8K16.338.016
1,000 pcs

Accessories



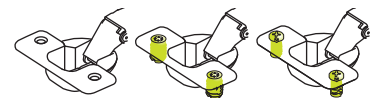
Cover caps for hinge arm
→ see page 2.70

Legend of hinge cup symbols

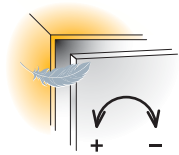
Screw-on ready
← screws

Machine insertion ready

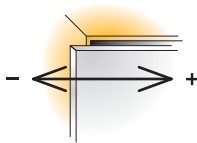
EasyFix system



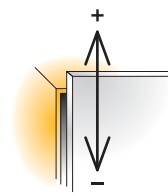
Damping adjustment



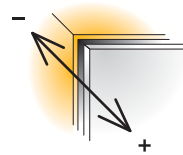
Door adjustment



Side adjustment
+3/-1 mm



Height adjustment
+2/-2 mm



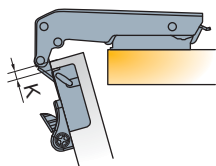
Depth adjustment
+2.5/-2.5 mm

For further explanation → see page 2.22

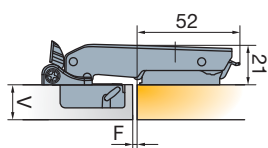
For further explanation → see pages 2.17-2.20

Mounting details

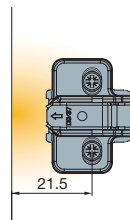
Mounting plate drilling distance



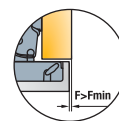
Drawings show application on D=2mm thick mounting plate



Drawings show application on D=2mm thick mounting plate



Door clearance at R=1mm
For further explanation → see page 2.8

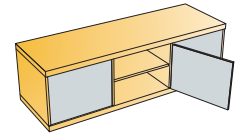
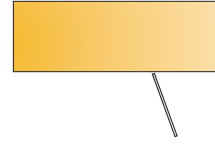
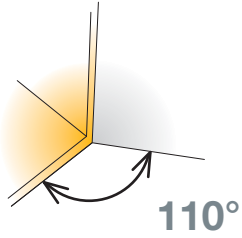


V	16	17	18	19	20	21	22	23	24	25	26	
K	3	0.5	0.7	0.8	1	1.2	1.5	1.7	2.1	2.8	4.1	5.5
	4	0.4	0.7	0.8	1	1.2	1.5	1.7	2.1	2.3	3.1	4.5
	5	0.4	0.6	0.7	0.9	1.1	1.4	1.6	2	2.2	2.6	3.5
	6	0.4	0.6	0.7	0.9	1.1	1.4	1.6	2	2.2	2.6	2.9 F _{MIN}

Gap Z_{MIN}=0

T-type 110

For wooden doors



- Opening angle
- Drilling diameter for hinge cup
- Drilling depth
- Hinge on plate mounting system

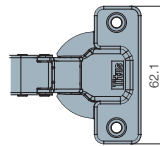
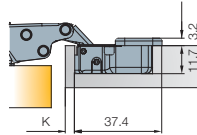
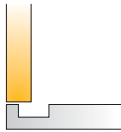
110°
35mm
11.7mm
'3Way' snap-on



Technical details

	Interaxis 45mm	Interaxis 52mm
Cup type	Item number	Item number
	702.0AK0.054.00	
	702.0AK1.054.00	702.0AM1.054.00
	702.0AK4.054.00	702.0AM4.054.00
Drilling patterns for hinge cups → see page 2.12		

Cranking
0mm



Made of steel

Mounting plates



Cam adjustable cruciform mounting plate
→ see page 2.44

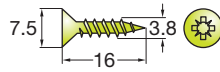


Cruciform mounting plate
→ see page 2.46



Cam adjustable linear mounting plate
→ see page 2.44

Hinge cup screws If not premounted



611.8K16.338.016
1,000 pcs

Accessories



Cover caps for hinge arm
→ see page 2.70



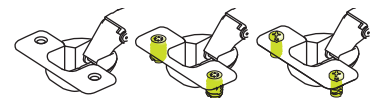
Push latch
→ see page 2.68

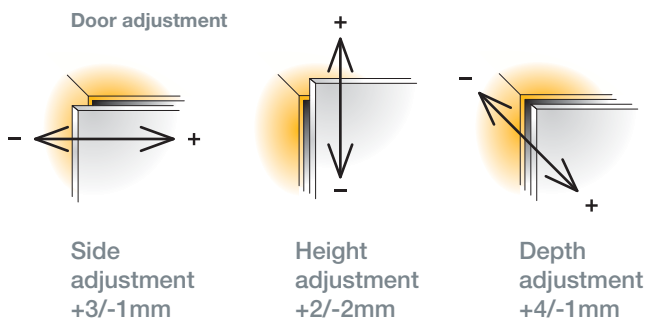
Legend of hinge cup symbols

Screw-on ready
← screws

Machine insertion ready

EasyFix system



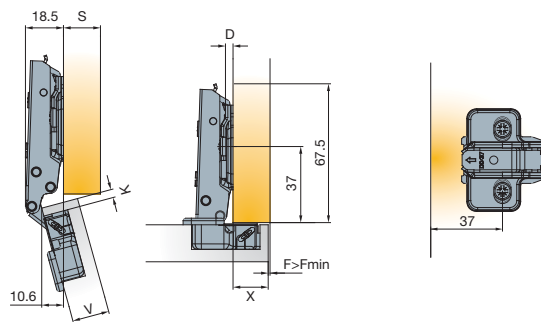


For further explanation → see pages 2.17-2.20

Mounting details

Mounting plate drilling distance

Mounting plate thickness table
For further explanation → see page 2.8



Drawings show application on D=0mm thick mounting plate

x	13	14	15	16	17	18	19
3	3	2	1	0			
4	4	3	2	1	0		
5		4	3	2	1	0	
6			4	3	2	1	0

D=13+K-x

Soft closing systems

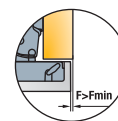


Glissando TT
→ see page 2.82



Glissando CR
→ see page 2.88

Door clearance at R=1mm
For further explanation → see page 2.8

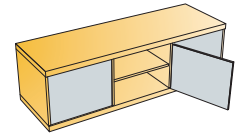
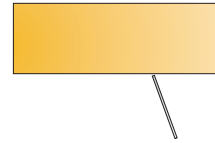
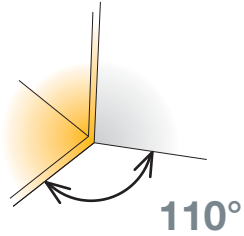


V	16	17	18	19	20	21	22	23	24	25	26
3	0.5	0.7	0.8	1	1.2	1.5	1.7	2.1	2.8	4.1	5.5
4	0.4	0.7	0.8	1	1.2	1.5	1.7	2.1	2.3	3.1	4.5
5	0.4	0.6	0.7	0.9	1.1	1.4	1.6	2	2.2	2.6	3.5
6	0.4	0.6	0.7	0.9	1.1	1.4	1.6	2	2.2	2.6	2.9

Gap Z_{MIN}=0

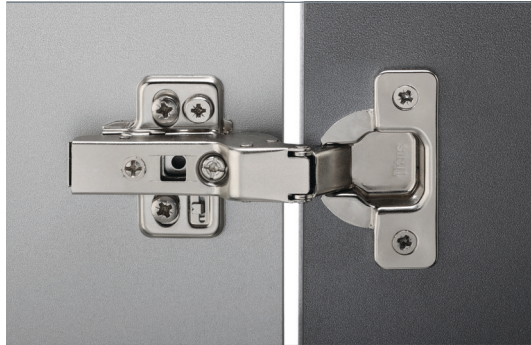
T-type 110

For wooden doors



- Opening angle
- Drilling diameter for hinge cup
- Drilling depth
- Hinge on plate mounting system

110°
35mm
11.7mm
'3Way' snap-on

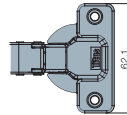
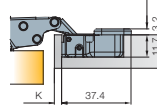
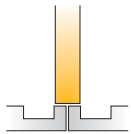


Technical details

Cup type	Interaxis 45mm	Interaxis 52mm
	Item number	Item number
	702.0CK0.054.00	
	702.0CK1.054.00	702.0CM1.054.00
	702.0CK4.054.00	702.0CM4.054.00
Drilling patterns for hinge cups → see page 2.12		
	702.0DK0.054.00	
	702.0DK1.054.00	702.0DM1.054.00
	702.0DK4.054.00	702.0DM4.054.00
Drilling patterns for hinge cups → see page 2.12		

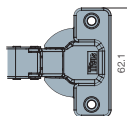
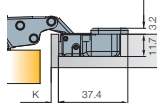
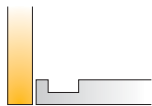
Cranking

9mm



Cranking

17mm



Mounting plates



Cam adjustable cruciform mounting plate
→ see page 2.44

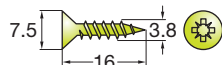


Cruciform mounting plate
→ see page 2.46



Cam adjustable linear mounting plate
→ see page 2.44

Hinge cup screws If not premounted



611.8K16.338.016
1,000 pcs

Accessories



Cover caps for hinge arm
→ see page 2.70



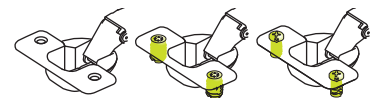
Push latch
→ see page 2.68

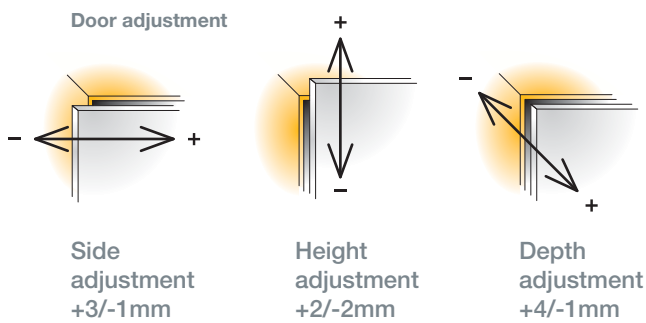
Legend of hinge cup symbols

Screw-on ready
← screws

Machine insertion ready

EasyFix system





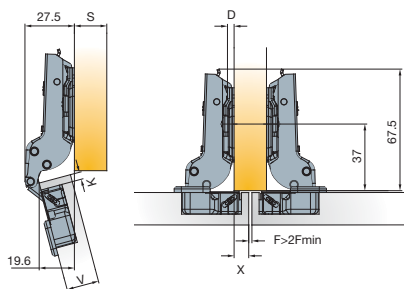
For further explanation → see pages 2.17-2.20

Mounting details

Mounting plate drilling distance

Mounting plate thickness table

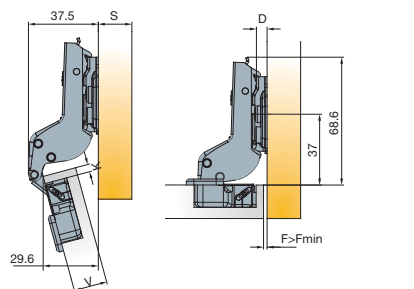
For further explanation → see page 2.8



Drawings show application on D=0mm thick mounting plate

x	4	5	6	7	8	9	10
3	3	2	1	0			
4	4	3	2	1	0		
5		4	3	2	1	0	
6			4	3	2	1	0

$D=4+K \cdot x$



Drawings show application on D=2mm thick mounting plate

V	16	17	18	19	20	21	22	23	24
3	0	0	0	0	1	1	1	1	2
4	1	1	1	1	2	2	2	2	3
5	2	2	2	2	3	3	3	3	4
6	3	3	3	3	4	4	4	4	D

$D=4+K+F$

Soft closing systems



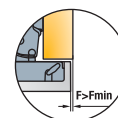
Glissando TT
→ see page 2.82



Glissando CR
→ see page 2.88

Door clearance at R=1mm

For further explanation → see page 2.8

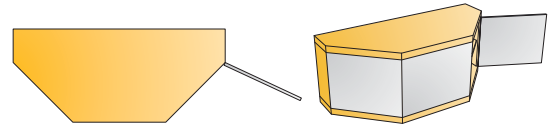
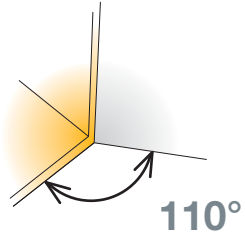


V	16	17	18	19	20	21	22	23	24	25	26
3	0.5	0.7	0.8	1	1.2	1.5	1.7	2.1	2.8	4.1	5.5
4	0.4	0.7	0.8	1	1.2	1.5	1.7	2.1	2.3	3.1	4.5
5	0.4	0.6	0.7	0.9	1.1	1.4	1.6	2	2.2	2.6	3.5
6	0.4	0.6	0.7	0.9	1.1	1.4	1.6	2	2.2	2.6	2.9

Gap $Z_{MIN}=0$

T-type 110/45°

45° angled application for wooden doors



- Opening angle
 - Drilling diameter for hinge cup
 - Drilling depth
 - Hinge on plate mounting system
- 110°
35mm
11.7mm
'3Way' snap-on

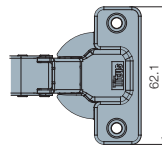
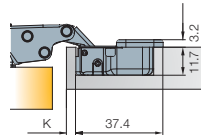
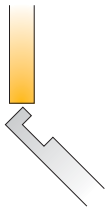


Technical details

	Interaxis 45mm	Interaxis 52mm
Cup type	Item number	Item number
	702.0B07.054.00	
	702.0C53.650.00	702.0C57.650.00
Drilling patterns for hinge cups → see page 2.12		

Cranking

17mm



Cup made of steel, arm made of zinc

Mounting plates



Cam adjustable cruciform mounting plate
→ see page 2.44

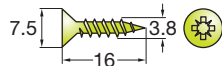


Cruciform mounting plate
→ see page 2.46



Cam adjustable linear mounting plate
→ see page 2.44

Hinge cup screws If not premounted



611.8K16.338.016
1,000 pcs

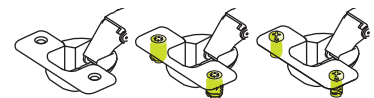
Accessories

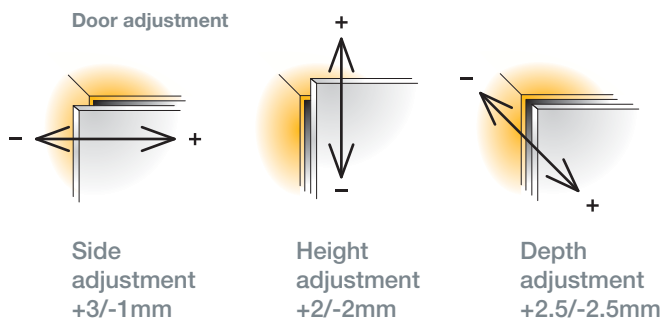


Cover caps for hinge arm
→ see page 2.70

Legend of hinge cup symbols

- Screw-on ready
- ← screws
- Machine insertion ready
- EasyFix system





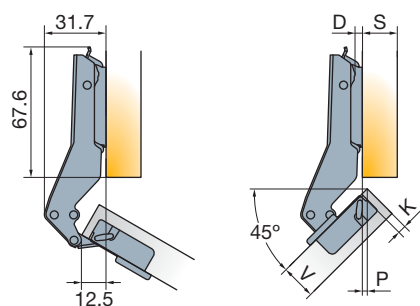
For further explanation → see pages 2.17-2.20

Mounting details

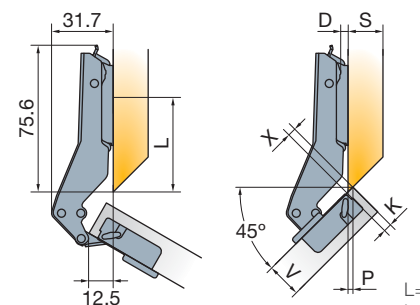
Mounting plate drilling distance

Mounting plate thickness table

For further explanation → see page 2.8



Drawings show application on D=0mm thick mounting plate



Drawings show application on D=0mm thick mounting plate

L=45 for thickness D=0
L=44 for thickness D=1
L=43 for thickness D=2
L=42 for thickness D=3
L=41 for thickness D=4

P	0	0.5	1	1.5	2	2.5	3	3.5	4
3		2		1		0			
4	3		2		1		0		
5		3		2		1		0	
6	4		3		2		1		0 D

X	0	0.5	1	1.5	2	2.5	3	3.5	4	4.5	5	6
3	2			1			0					
4			2			1			0			
5		3			2			1			0	
6	4			3			2			1		0 D

Soft closing systems

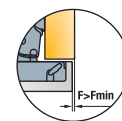


Glissando TT
→ see page 2.82



Glissando CR
→ see page 2.88

Door clearance at R=1mm
For further explanation → see page 2.8

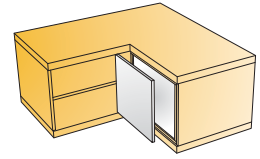
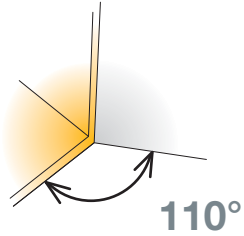


V	16	17	18	19	20	21	22	23	24	25	26
3	0.5	0.7	0.8	1	1.2	1.5	1.7	2.1	2.8	4.1	5.5
4	0.4	0.7	0.8	1	1.2	1.5	1.7	2.1	2.3	3.1	4.5
5	0.4	0.6	0.7	0.9	1.1	1.4	1.6	2	2.2	2.6	3.5
6	0.4	0.6	0.7	0.9	1.1	1.4	1.6	2	2.2	2.6	2.9 F _{MIN}

Gap Z_{MIN}=0

T-type 110/90°

For wooden door cabinets with blind panels



- Opening angle
- Drilling diameter for hinge cup
- Drilling depth
- Hinge on plate mounting system

110°
35mm
11.7mm
'3Way' snap-on

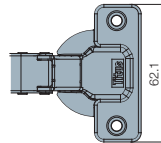
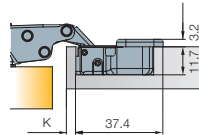


Technical details

	Interaxis 45mm	Interaxis 52mm
Cup type	Item number	Item number
	702.0A95.054.00	
	702.0D35.650.00	702.0D39.650.00
	702.0D29.650.00	702.0D33.650.00
Drilling patterns for hinge cups → see page 2.12		

Cranking

17mm



Cup made of steel, arm made of zinc

Mounting plates



Cam adjustable cruciform mounting plate
→ see page 2.44

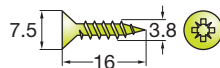


Cruciform mounting plate
→ see page 2.46



Cam adjustable linear mounting plate
→ see page 2.44

Hinge cup screws If not premounted



611.8K16.338.016
1,000 pcs

Accessories



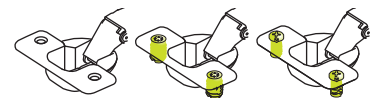
Cover caps for hinge arm
→ see page 2.70

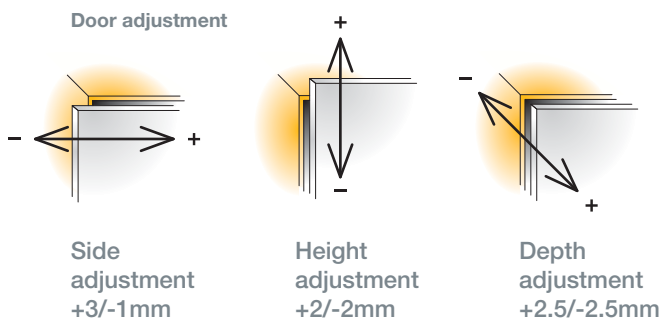
Legend of hinge cup symbols

Screw-on ready
← screws

Machine insertion ready

EasyFix system

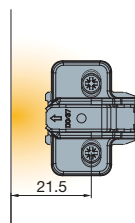
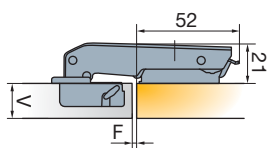
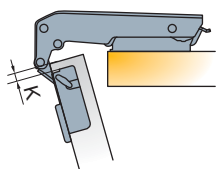




For further explanation → see pages 2.17-2.20

Mounting details

Mounting plate drilling distance



Drawings show application on D=2mm thick mounting plate

Drawings show application on D=2mm thick mounting plate

Soft closing systems

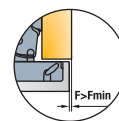


Glissando TT
→ see page 2.82



Glissando CR
→ see page 2.88

Door clearance at R=1mm
For further explanation → see page 2.8

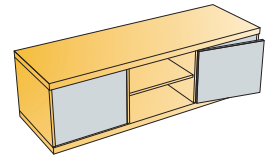
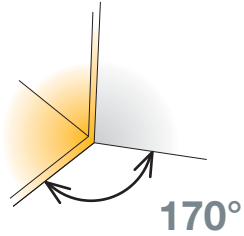


V	16	17	18	19	20	21	22	23	24	25	26	
K	3	0.5	0.7	0.8	1	1.2	1.5	1.7	2.1	2.8	4.1	5.5
	4	0.4	0.7	0.8	1	1.2	1.5	1.7	2.1	2.3	3.1	4.5
	5	0.4	0.6	0.7	0.9	1.1	1.4	1.6	2	2.2	2.6	3.5
	6	0.4	0.6	0.7	0.9	1.1	1.4	1.6	2	2.2	2.6	2.9

Gap Z_{MIN}=0

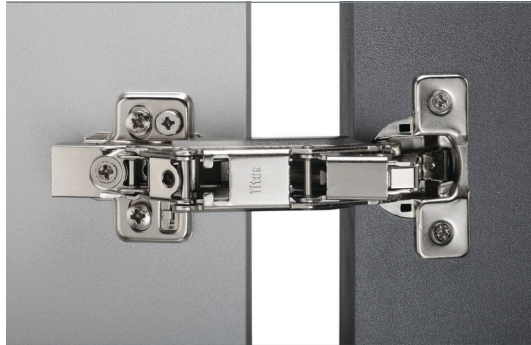
T-type 170

For wooden doors



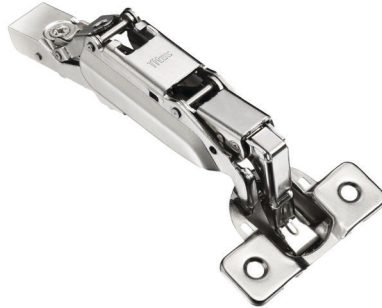
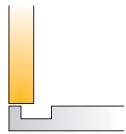
- Opening angle
- Drilling diameter for hinge cup
- Drilling depth
- Hinge on plate mounting system

- 165°
- 35mm
- 12mm
- '3Way' snap-on

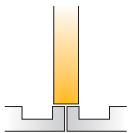


	Interaxis 45mm	Interaxis 52mm
Cup type	Item number	Item number
	702.0EK0.054.00	
	702.0EK1.054.00	702.0EM1.054.00
	702.0EK4.054.00	702.0EM4.054.00
Drilling patterns for hinge cups → see page 2.12		
		702.0GK0.054.00*
		702.0GK1.054.00*
		702.0GK4.054.00*
Drilling patterns for hinge cups → see page 2.12		

Cranking
0mm



Cranking
9mm



Mounting plates



Cam adjustable cruciform mounting plate
→ see page 2.44

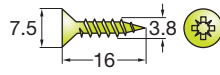


Cruciform mounting plate
→ see page 2.46



Cam adjustable linear mounting plate
→ see page 2.44

Hinge cup screws If not premounted



611.8K16.338.016
1,000 pcs

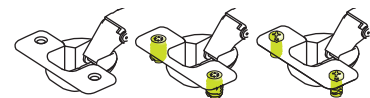
Accessories

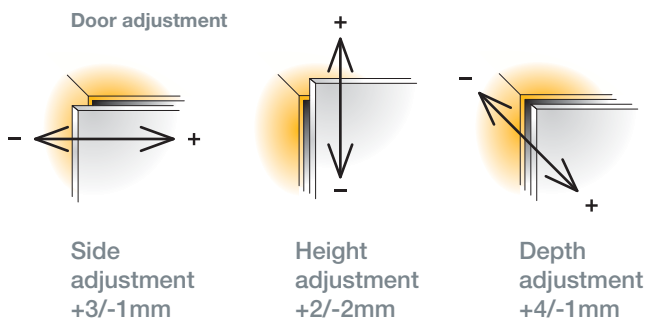


Push latch
→ see page 2.68

Legend of hinge cup symbols

- Screw-on ready
← screws
- Machine insertion ready
- EasyFix system





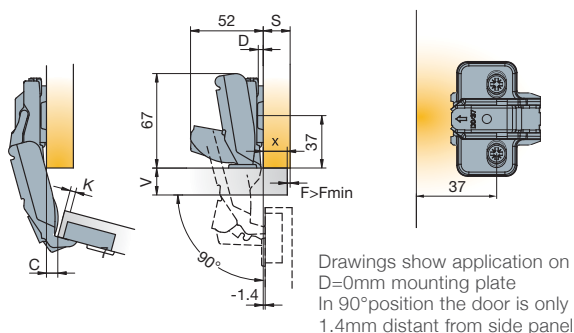
For further explanation → see pages 2.17-2.20

Mounting details

Mounting plate drilling distance

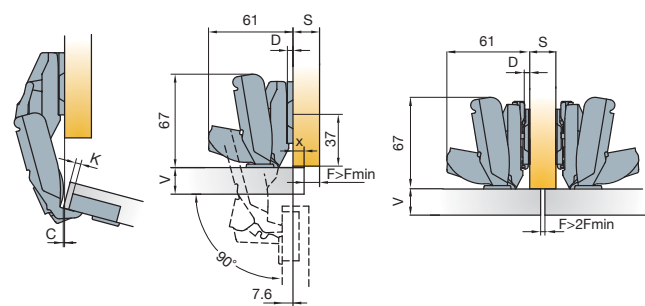
Mounting plate thickness table

For further explanation → see page 2.8



x	13	14	15	16	17	18	19
3	3	2	1	0			
4	4	3	2	1	0		
5		4	3	2	1	0	
6			4	3	2	1	0

$D=13+K-x$



x	13	14	15	16	17	18	19
3	3	2	1	0			
4	4	3	2	1	0		
5		4	3	2	1	0	
6			4	3	2	1	0

$D=13+K-x$

Soft closing systems



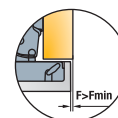
Glissando TL 170
→ see page 2.86



Glissando CR
→ see page 2.88

Door clearance at R=1mm

For further explanation → see page 2.8



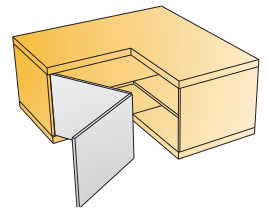
V	16	17	18	19	20	21	22	23	24	25	26
3	0.5	0.7	0.8	1	1.2	1.5	1.7	2.1	2.8	4.1	5.5
4	0.4	0.7	0.8	1	1.2	1.5	1.7	2.1	2.3	3.1	4.5
5	0.4	0.6	0.7	0.9	1.1	1.4	1.6	2	2.2	2.6	3.5
6	0.4	0.6	0.7	0.9	1.1	1.4	1.6	2	2.2	2.6	2.9

Gap $Z_{MIN}=0$

T-type

For Pie-cut Corner Cabinet

For wooden doors

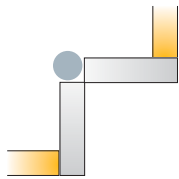


- Opening angle
- Drilling diameter for hinge cup
- Drilling depth
- Hinge on plate mounting system

110°
35mm
11.7mm
'3Way' snap-on



Corner Cabinet



	Interaxis 45mm	Interaxis 52mm
Cup type	Item number	Item number
	721.0PK0.650.00	
	721.0PK4.650.00	721.0PM4.650.00

Drilling patterns for hinge cups →
see page 2.12

Cup made of steel, arm made of zinc

Mounting plates



Cam adjustable cruciform mounting plate
→ see page 2.44

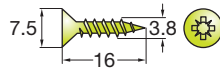


Cruciform mounting plate
→ see page 2.46



Cam adjustable linear mounting plate
→ see page 2.44

Hinge cup screws If not premounted



611.8K16.338.016
1,000 pcs

Accessories



Push latch
→ see page 2.68

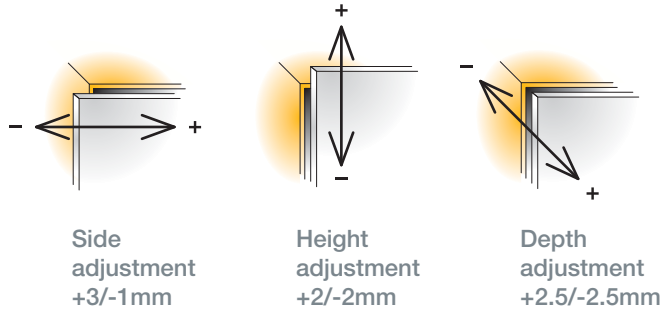
Legend of hinge cup symbols

Screw-on ready
← screws

EasyFix system



Door adjustment

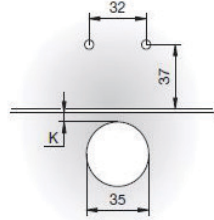
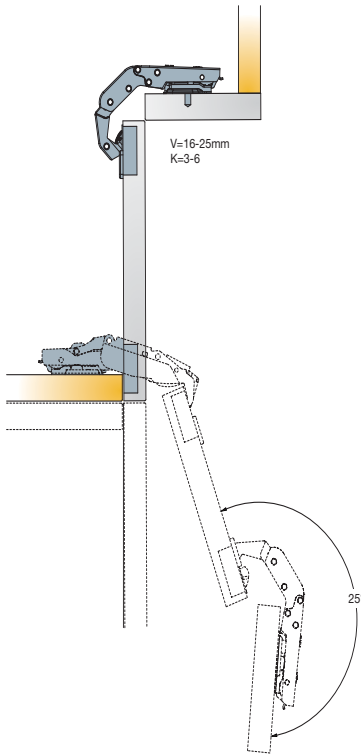


For further explanation → see pages 2.17-2.20

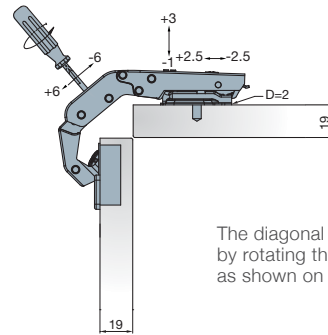
Mounting details

Mounting plate drilling distance

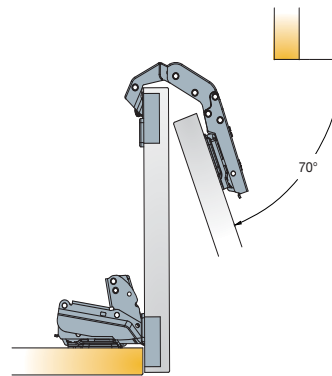
Adjustments



Any T-type-i mounting plate thickness of D=0 can be used

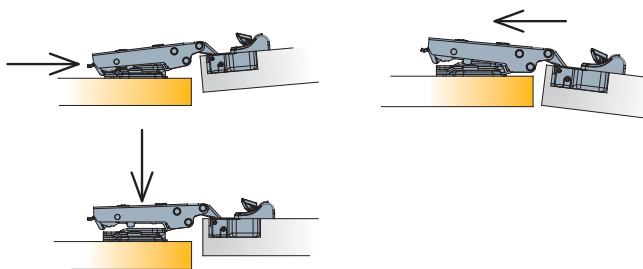


The diagonal adjustment is made by rotating the appropriate screw as shown on the drawing



T-type Mounting Plates

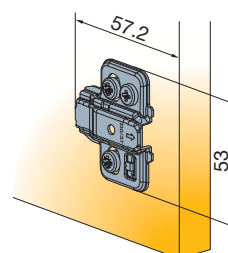
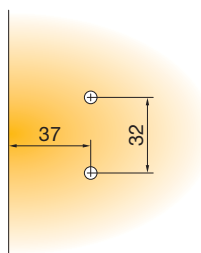
'3Way' snap-on mounting



Cam Adjustable Cruciform
Mounting Plate 37mm

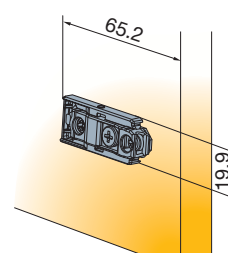
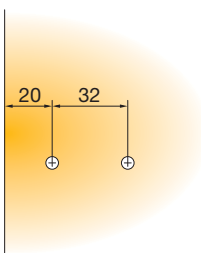
Drilling pattern

Dimensions



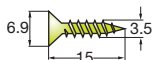
Made of steel

Cam Adjustable Linear
Mounting Plate



Made of steel and zinc

Fixing screw for cruciform mounting plate
If not premounted

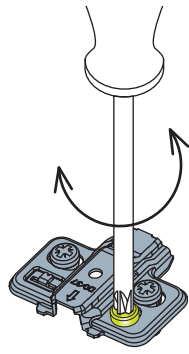


Chipboard screws
611.8K16.235.016

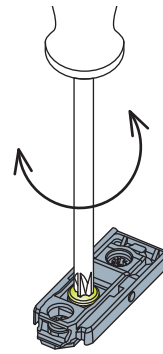
1,000 pcs



Mounting plate thickness



Height adjustment +2/-2mm



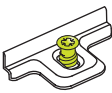
Height adjustment +2/-2mm

Mounting plate type	15		10.5
Mounting plate thickness (D)			
Item number			
0mm	700.0KC0.054.00	700.0KA0.054.00	700.0KF0.054.00
2mm	700.0KC2.054.00	700.0KA2.054.00*	700.0KF2.054.00
3mm	700.0KC3.054.00	700.0KA3.054.00	700.0KF3.054.00
0mm		700.0LB0.054.00	700.0LF0.054.00
2mm	700.0LC2.650.00	700.0LB2.054.00	700.0LF2.054.00
3mm	700.0LC3.650.00	700.0LB3.054.00	700.0LF3.054.00

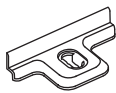
Legend of mounting plate type symbols



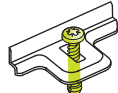
Premounted 15mm euro screws



Screw-on ready for chipboard screws
← screws

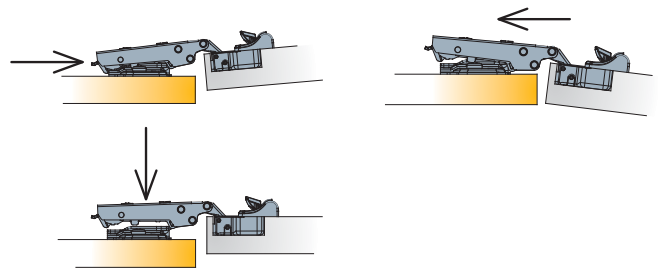


Premounted 10.5mm expanding dowels



T-type Mounting Plates

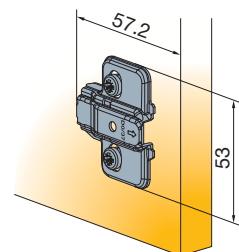
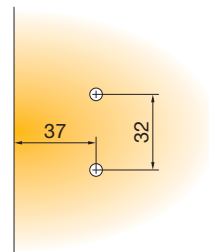
'3Way' snap-on mounting



Cruciform mounting plate 37mm

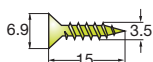
Drilling pattern

Dimensions



Made of steel

Fixing screw for cruciform mounting plate
If not premounted

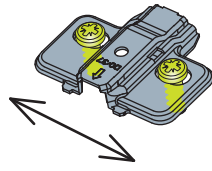


Chipboard screws
611.8K16.235.016

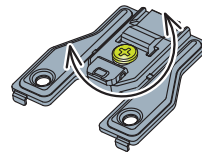
 1,000 pcs



Mounting plate thickness



Height adjustment +2/-2mm



Height adjustment +2/-2mm

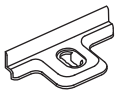
Mounting plate type		 15	 10.5
Mounting plate thickness (D)			
	Item number	Item number	Item number
0mm		700.0NC0.054.00	700.0NF0.054.00
1mm	700.0NA1.054.00		
2mm	700.0NA2.054.00	700.0NC2.054.00	700.0NF2.054.00
3mm	700.0NA3.054.00	700.0NC3.054.00	700.0NF3.054.00

Legend of mounting plate type symbols

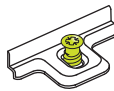


Screw-on ready for chipboard screws

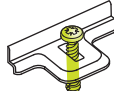
← screws



Premounted 15mm euro screws



Premounted 10.5mm expanding dowels



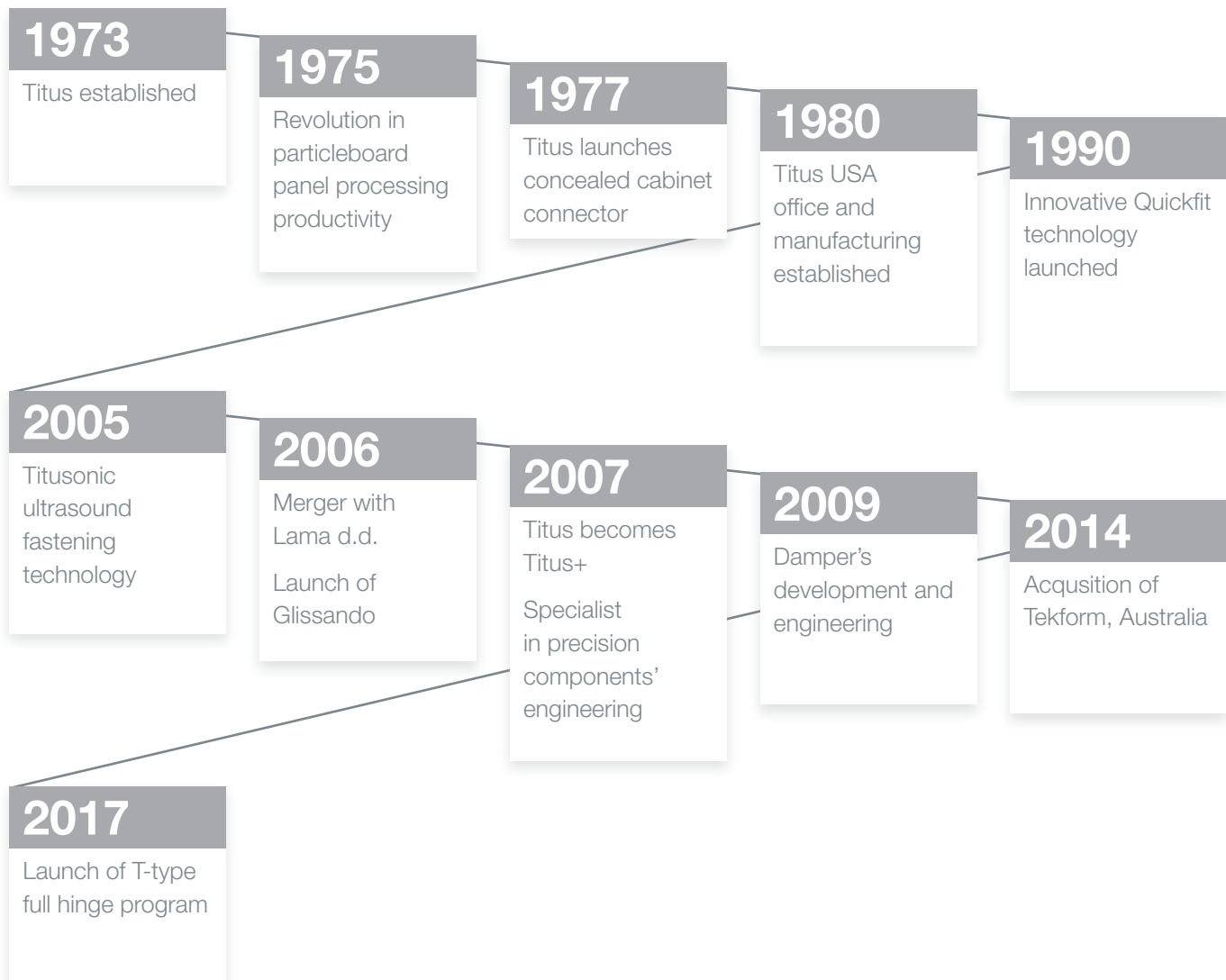
Titus Tekform Company Profile

Titus Group

Titus focuses on the design, manufacture and distribution of connectors, concealed hinges, drawers and soft closing mechanisms in furniture and household appliances.

Titus Group is owned and managed from its headquarters in United Kingdom. We are able to provide products and services to every customer around the world based on manufacturing facilities in Europe, North America, China, SE Asia, Australia and New Zealand.

Quickfit technology makes Titus the world leader in connectors for RTA furniture



Titus Tekform

Vision

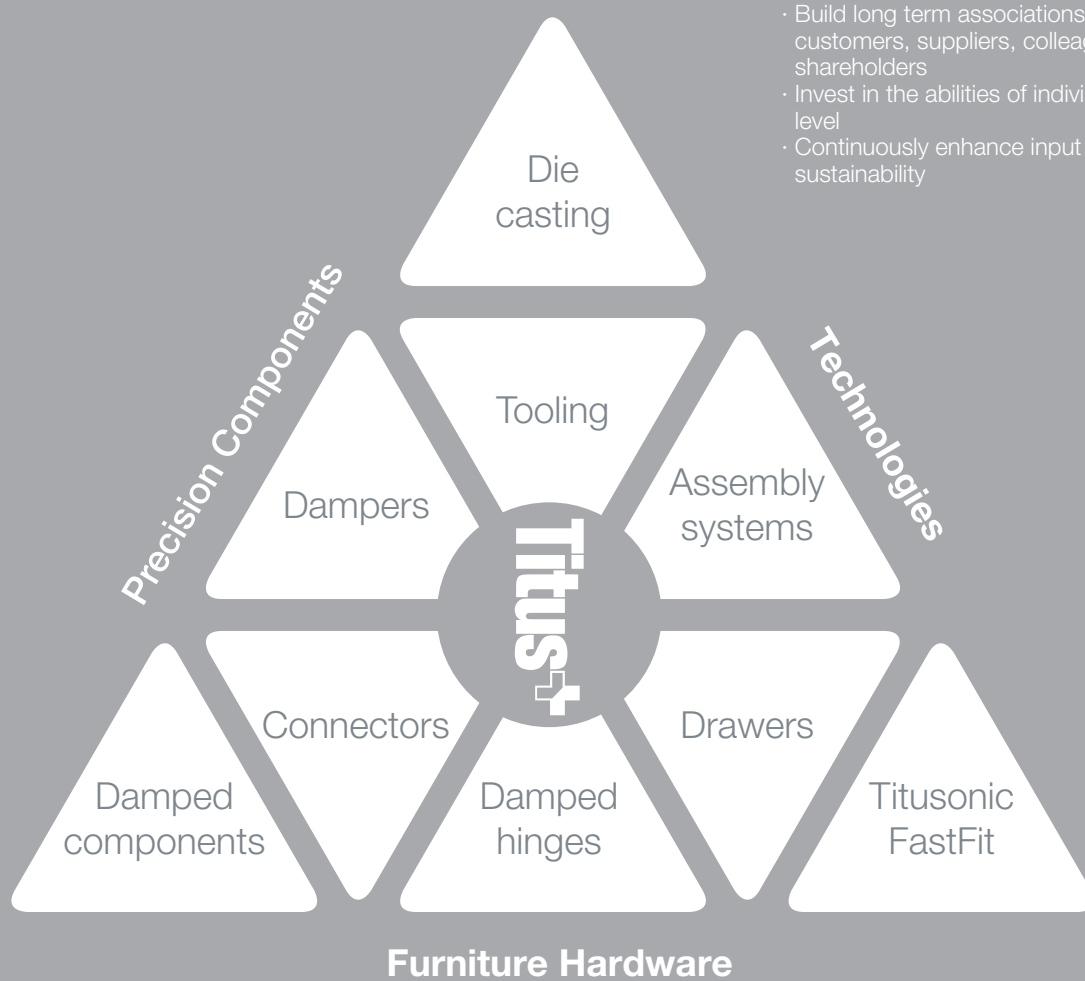
To be the supplier of choice to the Australasian kitchen manufacturing, cabinet making and shop-fitting industries

Mission

To provide customers with solutions that improve their competitiveness

Titus Business Philosophies and Principles

- Gain total knowledge of our customers and their markets
- Meet our customers' expectations with global consistency
- Build long term associations with customers, suppliers, colleagues and shareholders
- Invest in the abilities of individuals at every level
- Continuously enhance input efficiency and sustainability



Furniture Hardware

- Cabinet connectors
- Concealed hinges
- Soft closing systems
- Drawers and drawer systems
- Kitchen accessories
- Furniture locks
- Decorative

Components

- Dampers
- Precision components

Technologies

- Automation systems
- Precision castings
- Die cast technologies
- Tooling
- Ultrasound fastening technology
- FastFit technology

'Totally Integrated Engineering'

Product Design

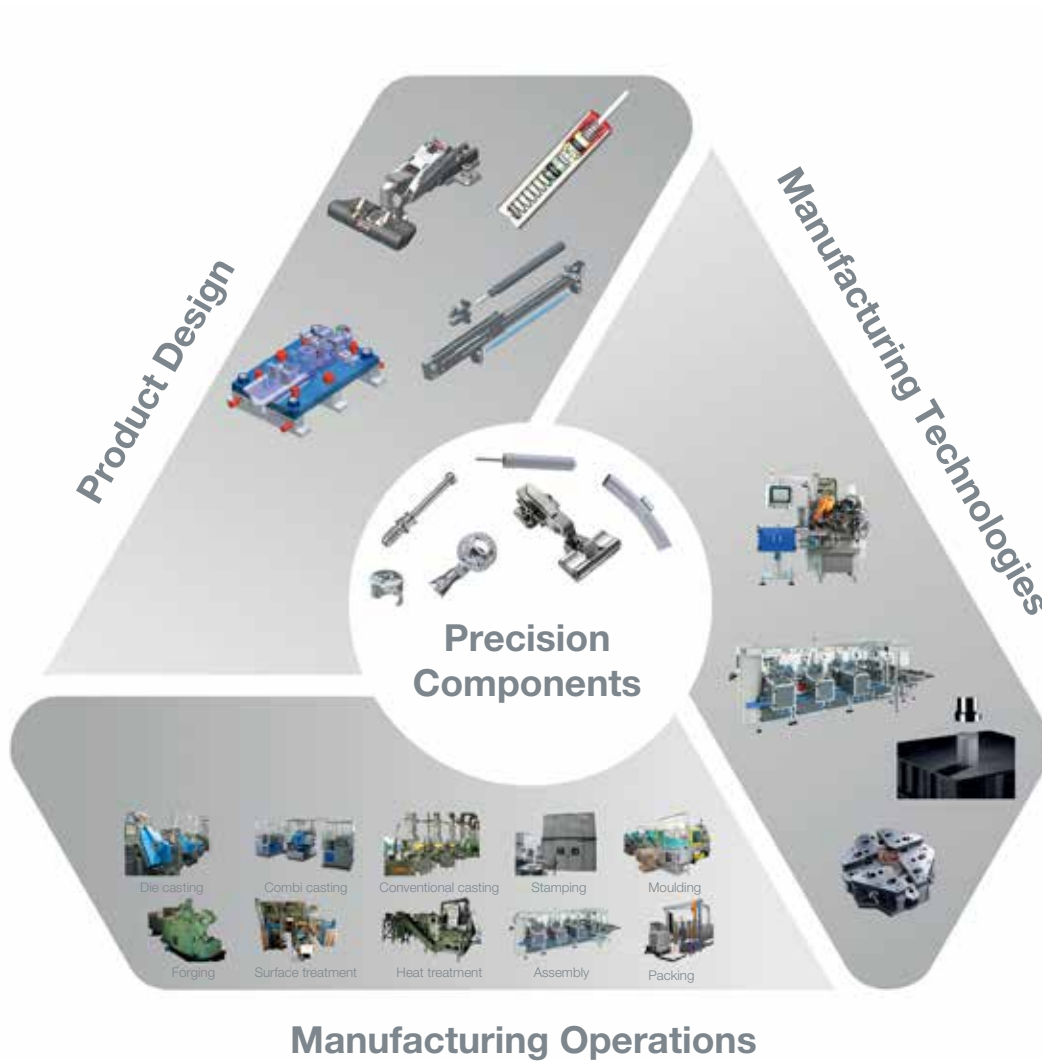
Design and engineering of unique components
Consistent and repeatable product quality

Manufacturing Technologies

to improve productivity and product quality

Manufacturing Operations

A wide array of technologies and services required for high volume production of precision components available in-house



Fittings for purpose

Unique product advantages for better value for money and lower 'total installed cost'

Innovations that improve

with less parts, less different parts, less preparation actions, faster assembly

Fast time-to-market

Quality

Continuous Improvement

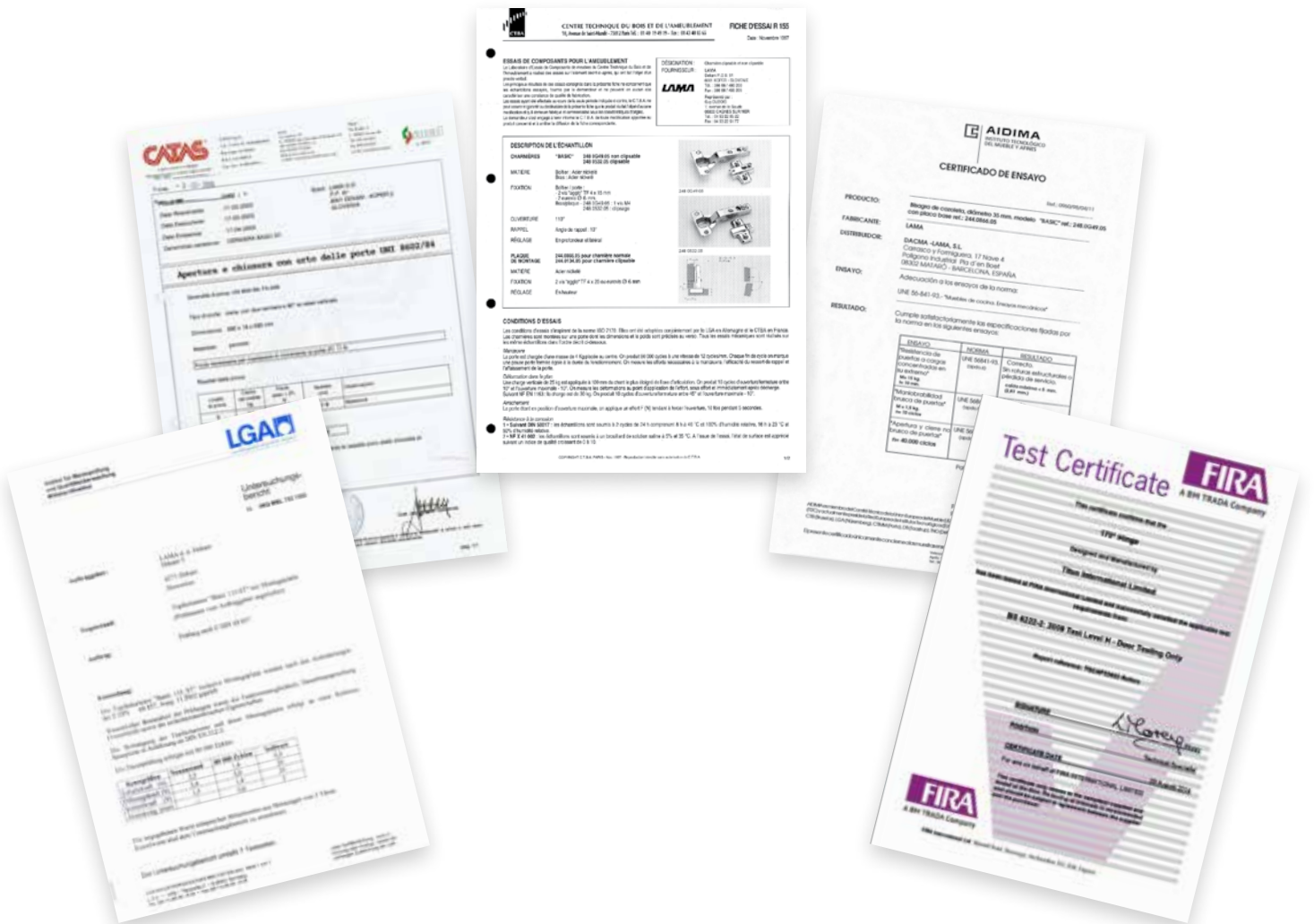
The Titus Group Mission, to improve the competitiveness of our customers, encourages us to continuously improve our products, services, processes and competencies of our employees.

Quality

We believe that the Titus Mission is achieved most effectively through the management of our design, manufacturing and service activities in conformance with the ISO 9001 standard for quality management. Quality has a broad meaning for us: it is our guide to the selection of materials, work, processes, internal relations and cooperation with partners.

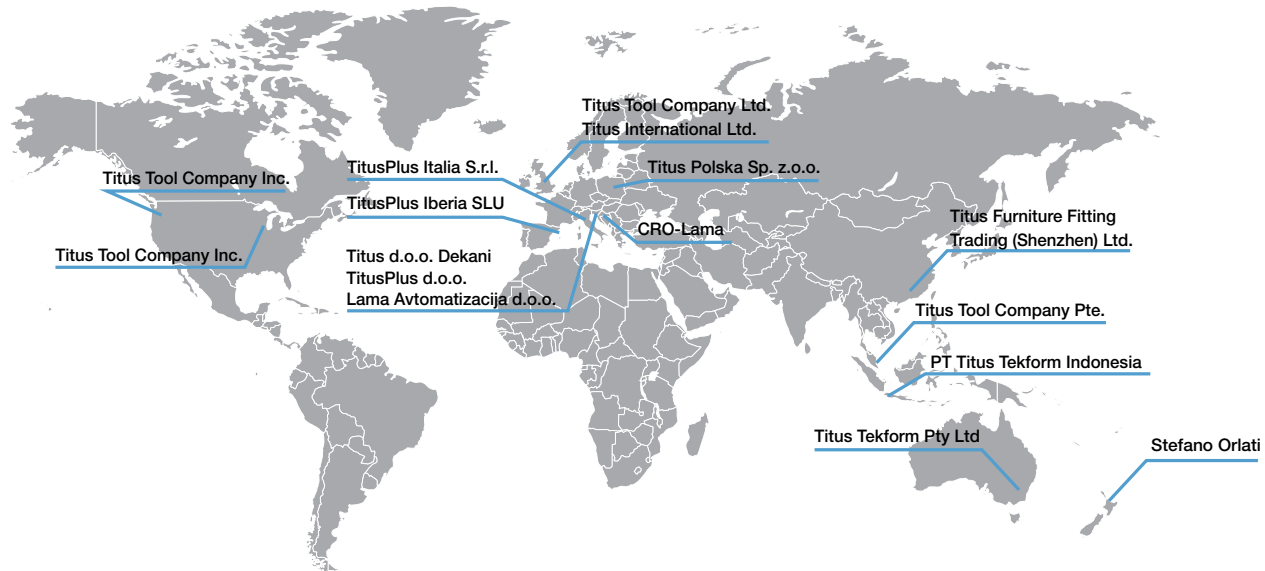
Products

Our integrated quality system produces technically optimised products of high quality. They are assessed regularly in our own test labs as well as by internationally renowned institutions, such as LGA from Germany, CTBA from France, FIRA from United Kingdom, CATAS from Italy, AIDIMA from Spain, and others.



Global player

Worldwide design, manufacturing and distribution capabilities



Victoria

Titus Tekform Pty Ltd
8/59 Jersey Road
Bayswater, VIC, 3153
T: +61 3 9737 5566
Fax: +61 3 9729 8780

Titus Tekform Pty Ltd
2/24 Kane Road
Wodonga, VIC, 3690
T: +61 2 6056 3188
Fax: +61 2 6056 3190

South Australia

Titus Tekform Pty Ltd
PO Box 357, Bayswater,
VIC, 3153
T: +61 8 8447 3700
Fax: +61 8 8447 3183

Queensland

Titus Tekform Pty Ltd
76 Northlink Place
Virginia, QLD, 4014
T: +61 7 3266 3999
Fax: +61 7 3266 5234

Titus Tekform Pty Ltd
20 Civil Road
Garbutt, QLD, 4814
T: +61 7 4779 1366
Fax: +61 7 4779 1316

New South Wales

Titus Tekform Pty Ltd
Unit 1&2, 41-43 Whyalla Place
Prestons, NSW, 2170
T: +61 2 9826 0007
Fax: +61 2 9826 0074

Titus Tekform Pty Ltd
Unit 3, 100 Munibung Road
Cardiff, NSW, 2285
T: +61 2 4954 4011
Fax: +61 2 4354 4233

Titus Tekform Pty Ltd
(John Kaye Kitchen Hardware)
Cnr Brookes & Heffernan Street
Mitchell, ACT, 2911
T: +61 2 9826 0007
Fax: +61 2 9826 0074

Tasmania

Titus Tekform Pty Ltd
88 Hopkins Street Moonah, TAS,
7009
T: +61 3 6273 1199
Fax: +61 3 6273 0050

Western Australia

Titus Tekform Pty Ltd
(Biemel's Cabinet Hardware)
5/2 Wittenberg Drive
Canning Vale, WA, 6155
T: +61 8 9455 2122
Fax: +61 8 9455 3680

New Zealand

Auckland

Stefano Orlati
34 Waipareira Avenue
Henderson, Auckland
T: +64 9 837 0886
Fax: +64 9 837 8003

Christchurch

Stefano Orlati
162 Wordsworth Street
Sydenham, Christchurch
T: +64 3 981 8518
Fax: +64 3 942 7296

www.titustekform.com.au
info@titustekform.com.au

www.stefano-orlati.com
stefano-orlati@titusplus.com

