

# Sliding Door Solutions

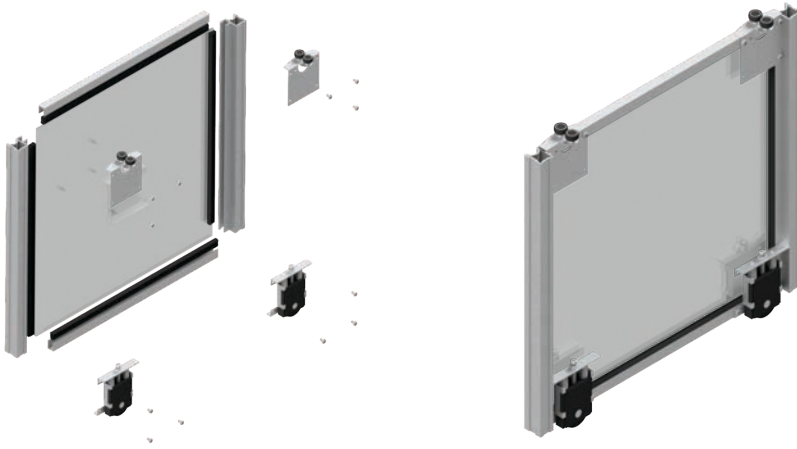
## Technical Installation Manual

# Tekform Sliding Door Systems

## Glidesoft RD Bottom Running System

### Sliding Door System for Bottom Running Tracks

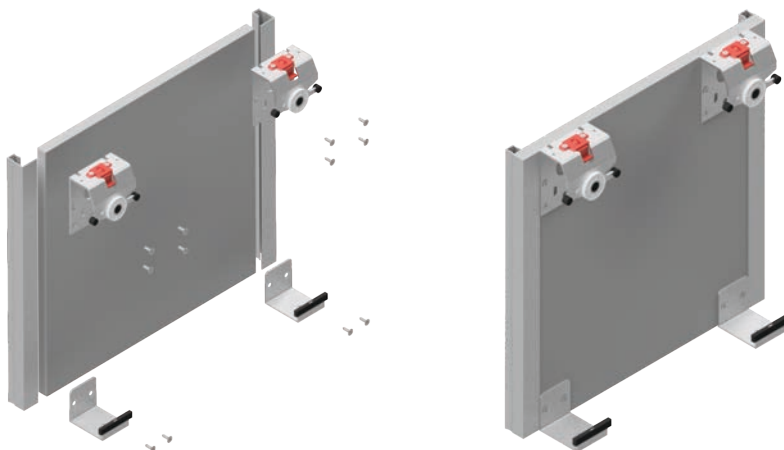
GlideSoft RD provides a floor to ceiling panel system for bottom running tracks. It is compatible with 4mm or 10mm panel, glass and acrylic with a 60kg load capacity per door. GlideSoft RD is available with or without the Titus SD100s damping system for smooth and silent soft closing.



## GlideSoft TP Top Running System

### Sliding Door System for Top Running Tracks

GlideSoft TP provides a cabinet based panel system for top running tracks. It takes 16mm standard and 18mm routed panels with a 50kg load capacity per door. GlideSoft TP is available with and without soft close damping on side doors and offers a centre rest kit for centre doors.



# GlideSoft RD System

## Installation Instructions

### Installation of Top and Bottom Rail

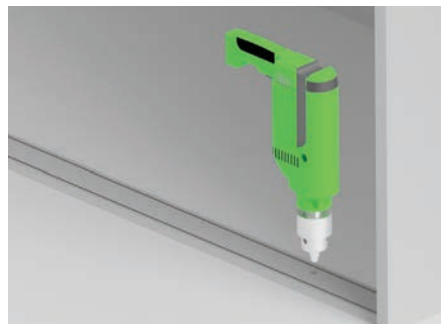
#### Top Rail

1. Cut the Top rail the inside length of the cabinet
2. Pre-drill pilot holes for screws alternately in the front and back rail grooves.
3. Line up the rail so the front panel is in line with the front side of the end panel
4. Screw into place.



#### Bottom Rail

1. Cut the Bottom rail the inside length of the cabinet
2. Pre-drill pilot holes into the profile
3. Position the rail so it is offset 8mm from the front side of the end panel
4. Screw into place.

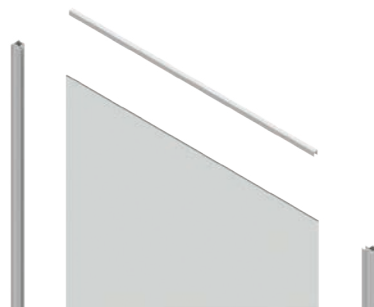
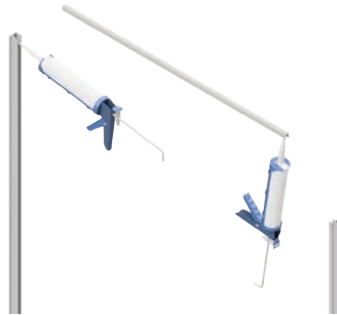


# GlideSoft RD System Installation Instructions

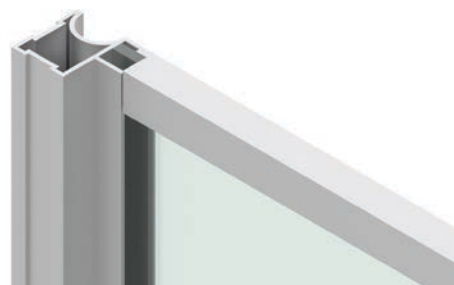
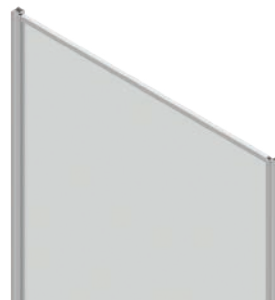
## Door Assembly

### U and Handle Extrusions

1. Referring to p.17, cut U profiles and handle profiles
2. Silicon inside the channel of the U profile and the side channel of the handle profile



Position the profiles onto the door, if the door is 4mm make sure the door is pushed to the front of the handle profile



*Back view of door*

# GlideSoft RD System

## Installation Instructions

### Door Assembly

#### Wedge Gaskets

1. Referring to p.17, cut all wedge gaskets

2. Push the wedge gaskets into the remaining channel area of the aluminium profiles

Note: Wedge gaskets are only used if you are using 4mm thick panel or glass.

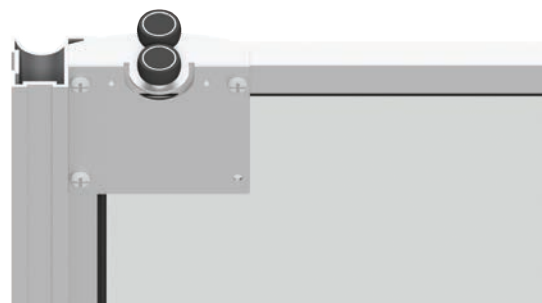
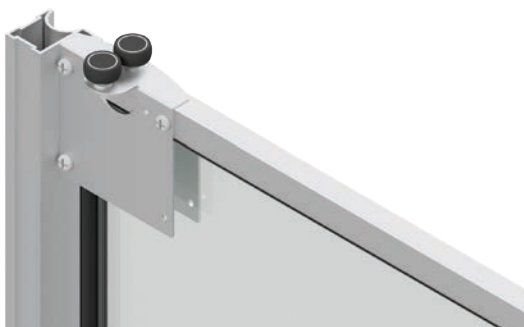


*Back view of door*

#### Top Mechanism

1. Locate position of the top mechanism tight in the top corners,  
2. Pre-drill into the aluminium profiles

3. Fix the mechanisms with screws  
4. Repeat for the other side



*Back view of door*

# GlideSoft RD System

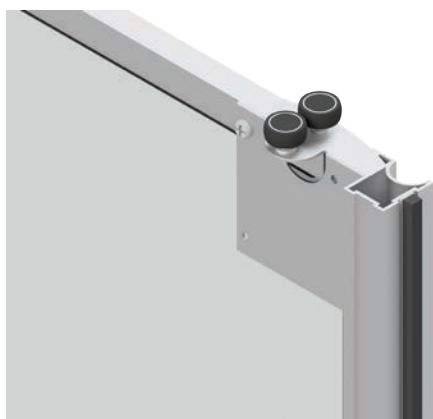
## Installation Instructions

### Door Assembly

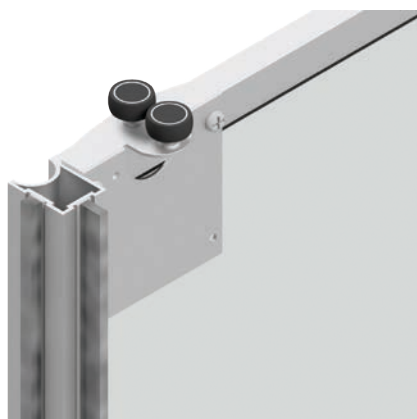
#### Brushstrips

1. Cut Brush strips to length of the handle extrusion
2. The 9mm brush strip is located on the back of the front door. It is positioned in the thin channel of the handle profile. It is to be on the handle profile which will be positioned in the middle when both doors are shut.

3. The 6mm brush strips are located on all the side of every handle profile.



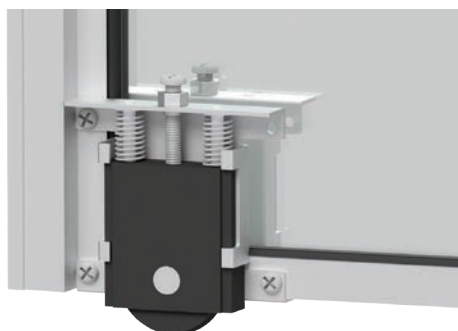
*Back view of door*



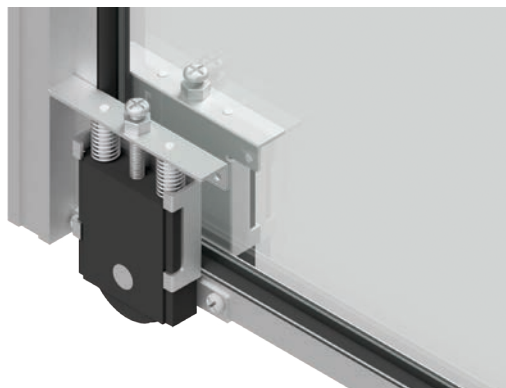
#### Bottom Mechanism

1. Locate position of the Bottom mechanism tight in the bottom corners,
2. Pre-drill into the aluminium profiles

3. Fix the mechanisms with screws
4. Repeat for the other side



*Back view of door*



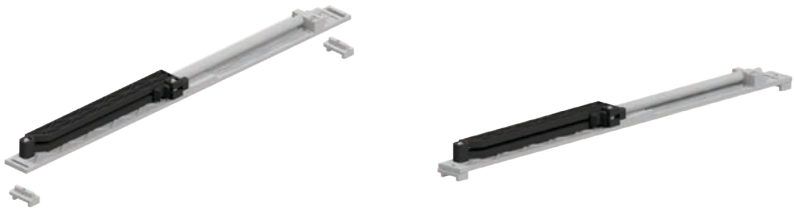
# GlideSoft RD System

## Installation Instructions

### Door Assembly

#### Soft Close Damping

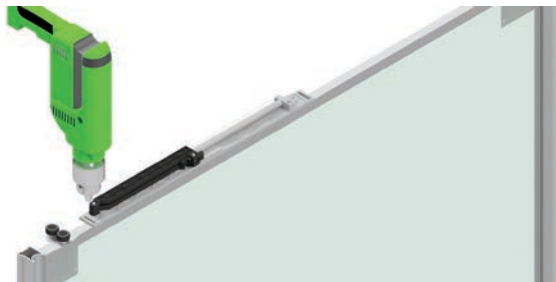
1. Locate the lifters into the soft close mechanism



2. Locate the lifters and soft close to the top U profile, measuring 105mm on the side of closing from the outside of the handle profile to the edge of the soft close flat plate



3. Pre-drill holes into the U profile



4. Screw in with screwdriver



5. Fix with power drill



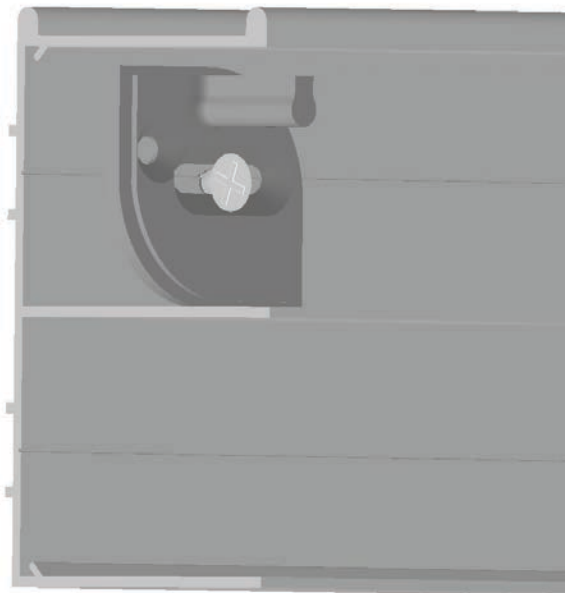
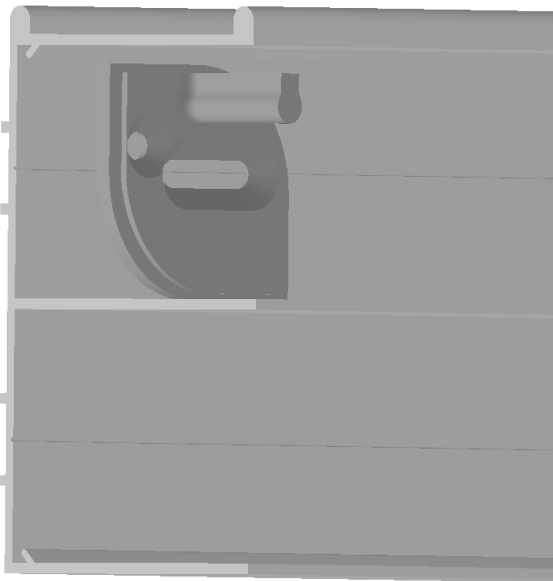
# GlideSoft RD System Installation Instructions

## Actuator Installation

### Actuator Assembly

1. Locate actuator so the extended hole is over the groove line

2. Drill hole and fix screw



3.. Drill hole and fix screw in second hole

Note: Actuator can be adjusted after assembly. For adjustment instructions, see p.11



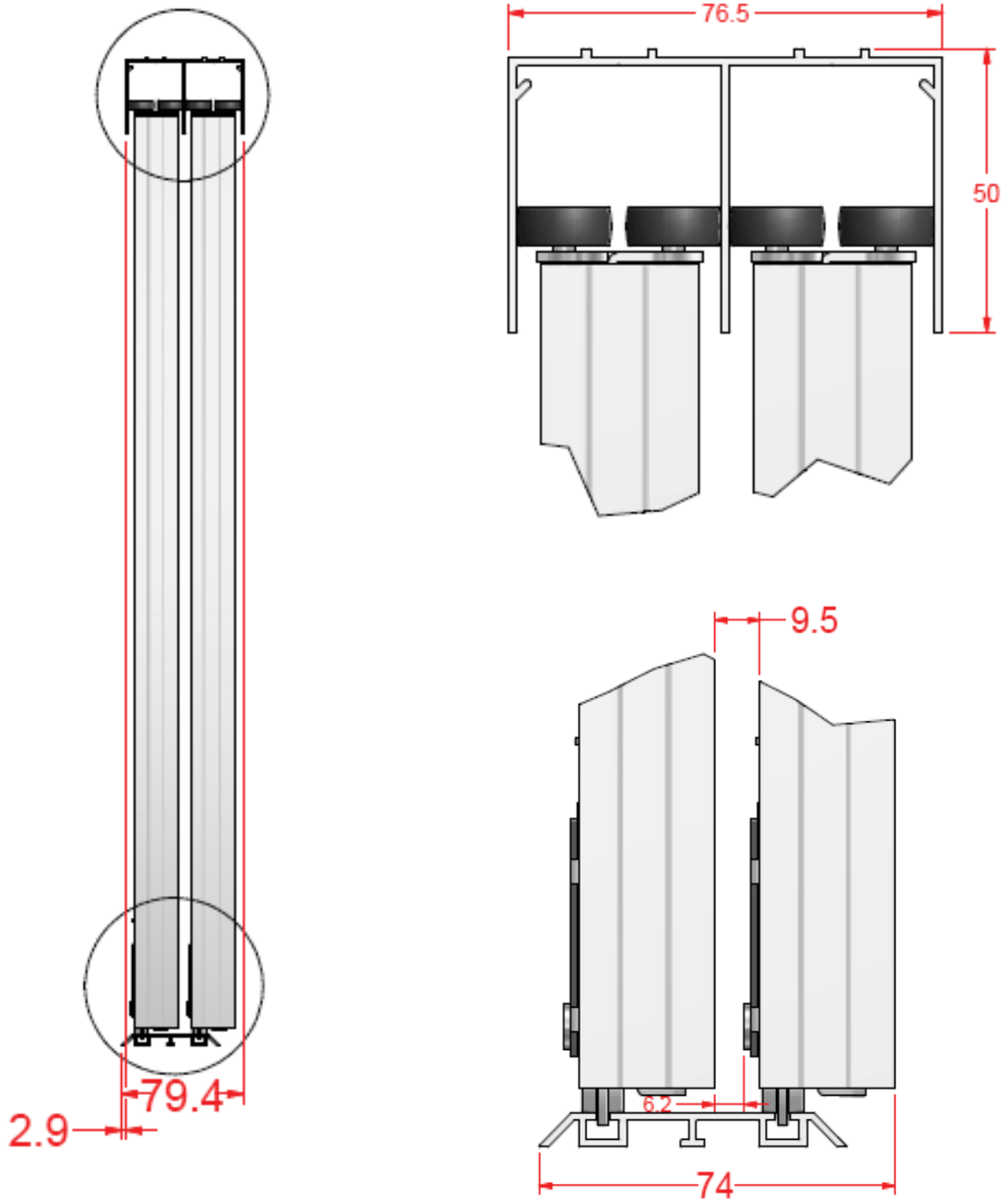


# Tekform Sliding Door Systems

## Cabinet Formation GlideSoft RD

### Sliding Door System for Bottom Running Tracks

Mechanism location for top and bottom rails.



# GlideSoft RD System

## Installation Instructions

### Table for Door Sizing

| 2 Door | Cabinet | Overall Door   | U Extrusion | Handle Extrusion | Vertical Wedge Gasket | Horizontal Wedge Gasket | Door Panel  |
|--------|---------|----------------|-------------|------------------|-----------------------|-------------------------|-------------|
| Height | A       | $C = A-55$     |             | $F = C$          | $G = C-35$            |                         | $I = C-3$   |
| Width  | B       | $D = (B+30)/2$ | $E = J-24$  |                  |                       | $H = E-10$              | $I = C-3$   |
| 3 Door | Cabinet | Overall Door   | U Extrusion | Handle Extrusion | Vertical Wedge Gasket | Horizontal Wedge Gasket | Door Panel  |
| Height | K       | $M = K-55$     |             | $P = M$          | $Q = M-35$            |                         | $S = M-3$   |
| Width  | L       | $N = (L+45)/3$ | $O = N-24$  |                  |                       | $R = N-10$              | $T = N-46$  |
| 4 Door | Cabinet | Overall Door   | U Extrusion | Handle Extrusion | Vertical Wedge Gasket | Horizontal Wedge Gasket | Door Panel  |
| Height | U       | $W = U-55$     |             | $Z = W$          | $AA = (W-35)$         |                         | $CC = W-3$  |
| Width  | V       | $X = (V+60)/4$ | $Y = N-24$  |                  |                       | $BB = X-10$             | $DD = X-46$ |

| 2 Door Installation |                                | 3 Door Installation |                                | 4 Door Installation |                                |
|---------------------|--------------------------------|---------------------|--------------------------------|---------------------|--------------------------------|
| A                   | cabinet height                 | K                   | cabinet height                 | U                   | cabinet height                 |
| B                   | cabinet width                  | L                   | cabinet width                  | V                   | cabinet width                  |
| C                   | overall door height            | M                   | overall door height            | W                   | overall door height            |
| D                   | overall door width             | N                   | overall door width             | X                   | overall door width             |
| E                   | U extrusion width              | O                   | U extrusion width              | Y                   | U extrusion width              |
| F                   | handle extrusion height        | P                   | handle extrusion height        | Z                   | handle extrusion height        |
| G                   | vertical wedge gasket length   | Q                   | vertical wedge gasket length   | AA                  | vertical wedge gasket length   |
| H                   | horizontal wedge gasket length | R                   | horizontal wedge gasket length | BB                  | horizontal wedge gasket length |
| I                   | door panel height              | S                   | door panel height              | CC                  | door panel height              |
| J                   | door panel width               | T                   | door panel width               | DD                  | door panel width               |

# GlideSoft RD System Installation Instructions

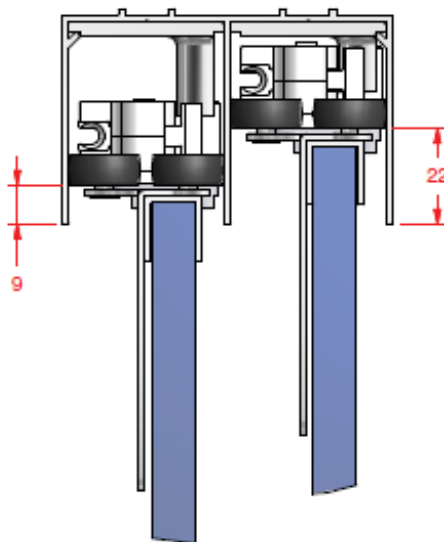
## Adjusting the Mechanism

**Bottom Adjustment** 1. Use a screwdriver and spanner to adjust the screw and bolt to make the mechanism sit higher or lower

Note: Bottom adjustment is only required when the door is not parallel.



Back view of door - inside cabinet

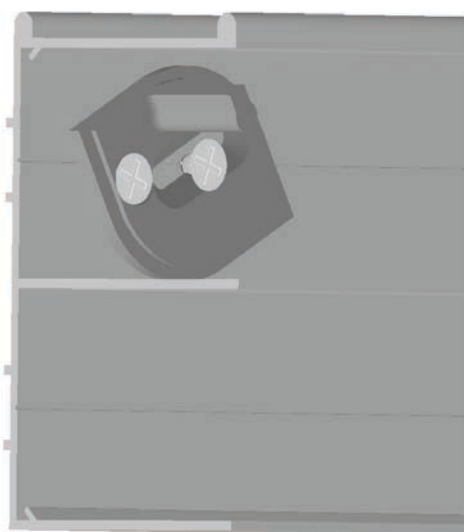
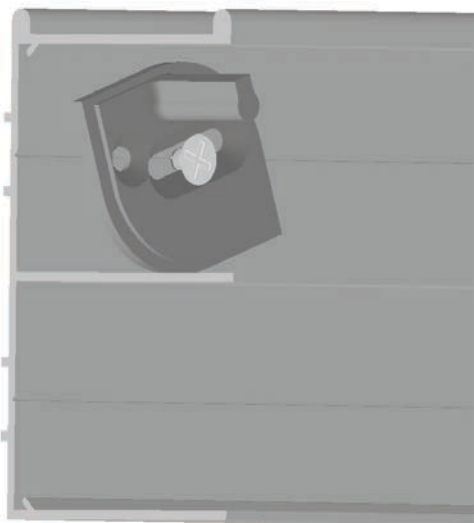


Range of height with adjustable damper

**Actuator Adjustment** 1. Remove second screw then rotate actuator to achieve desired soft close

2. Once you have found the optimal soft close, drill and fix screw

Note: Actuator can be adjusted later if needed.



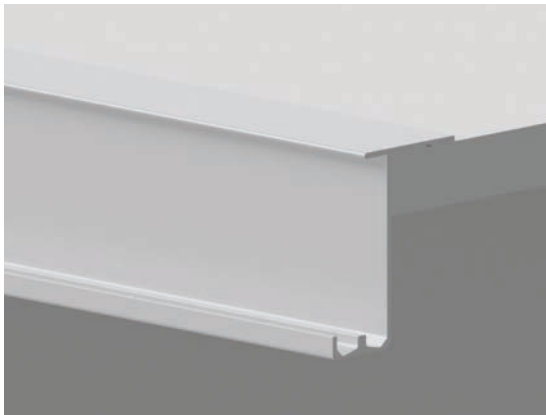
# GlideSoft TP System

## Installation Instructions

### Installation of Top and Bottom Rail

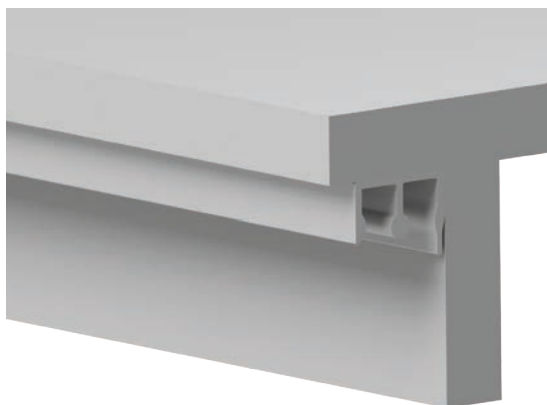
#### Top Rail

1. Referring to p.18, use CI measurement to cut top rail
2. Referring to p.17, set the profile in place
3. Pre-drill holes every 300mm then fix with screws



#### Bottom Rail

1. Referring to p.18, use CI measurements to cut the top rail
2. Referring to p.17, set the bottom of the profile in place
3. Pre-drill holes every 300mm then fix with screws



# GlideSoft TP System Installation Instructions

## Door Assembly

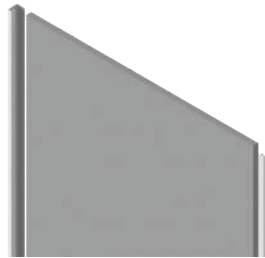
### Handle Extrusions

1. Referring to p.17-18 for sizing, cut door panels

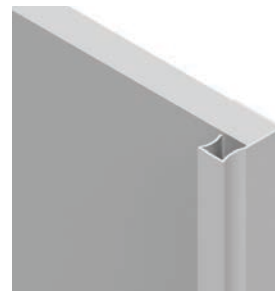
2. Cut the handle extrusions the same height as the door panel

3. Fit the handle profile to the door

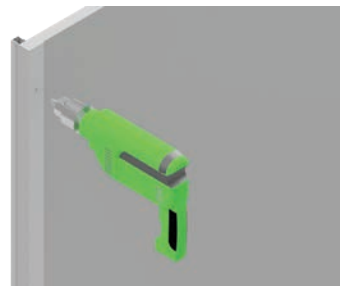
4. Pre-drill holes into the handle extrusion, then fix screws so the handle extrusion is secure to the door



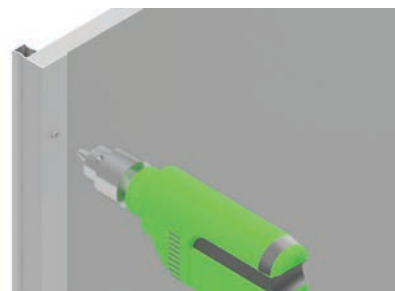
*Front view of door*



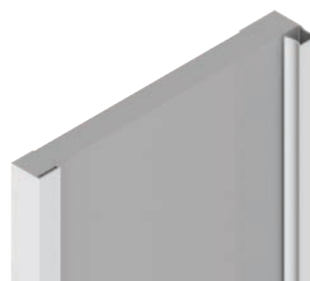
*Front view of door*



*Back view of door*



*Back view of door*



*Front view of door*

# GlideSoft TP System

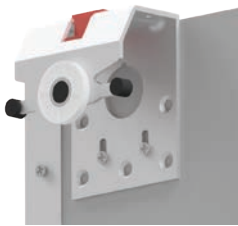
## Installation Instructions

### Front Door Assembly

#### Top Mechanism

1. Using below measurement (45mm from centre of top hole to top of door), fix the top mechanisms to the top of the door

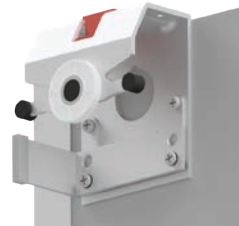
2. Fix actuator to the side of the door requiring damping, as shown below



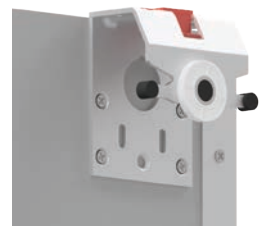
Actuator side



Actuator side



Actuator side



Back view of door



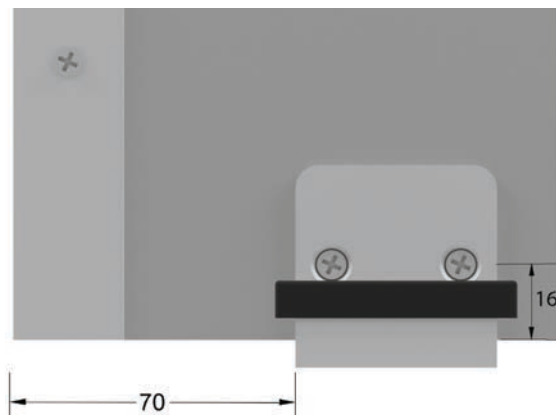
#### Bottom Locator

1. Using p.17 as a guide, fix the locators to the bottom of the door

2. Fix locators 70mm from each side of the door



Back view of door



# GlideSoft TP System

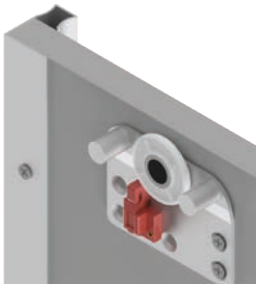
## Installation Instructions

### Back Door Assembly

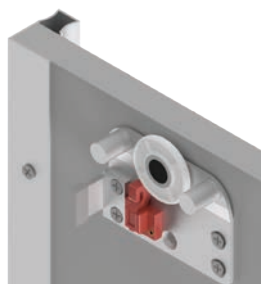
#### Top Mechanism

1. Using below measurement (60mm from centre of top hole to top of door), fix the top mechanisms to the top of the door, making sure wheels align as seen on p.17

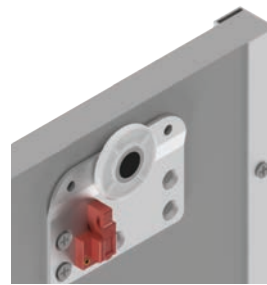
2. Fix actuator to the side of door requiring damping, as shown below



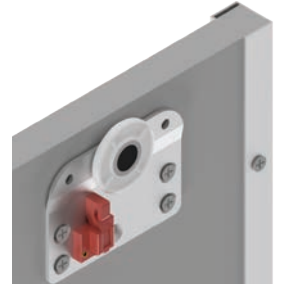
Actuator side



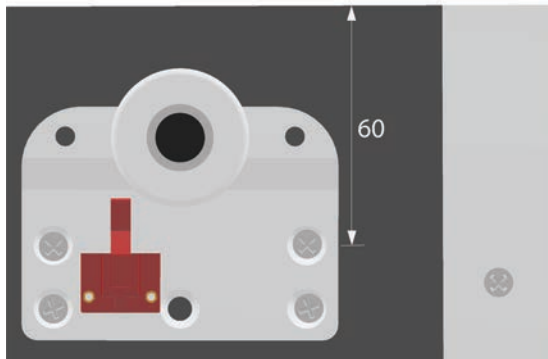
Actuator side



Back view of door



Back view of door



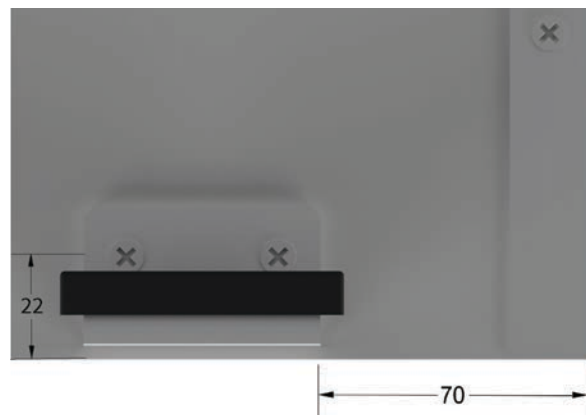
#### Bottom Locator

1. Using p.17 as a guide, fix the locators to the bottom of the door

2. Fix locators 70mm from each side of the door



Back view of door

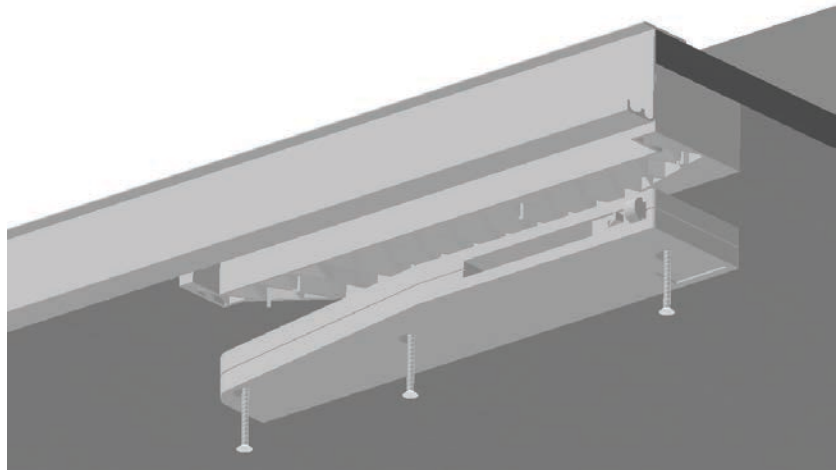


# GlideSoft TP System Installation Instructions

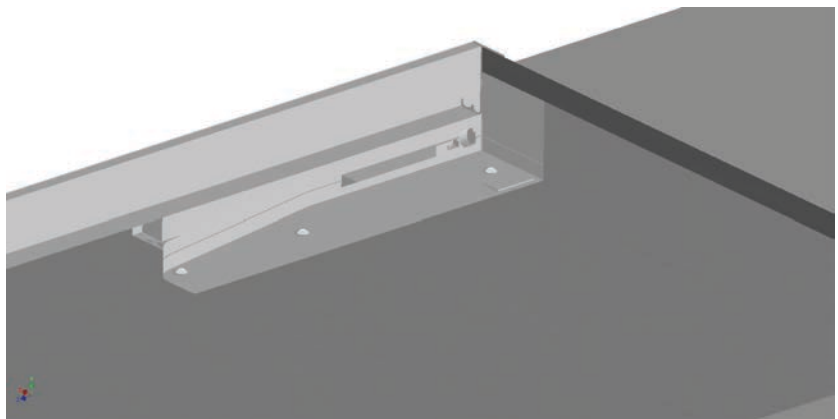
## Door Assembly

### Soft Close Damping

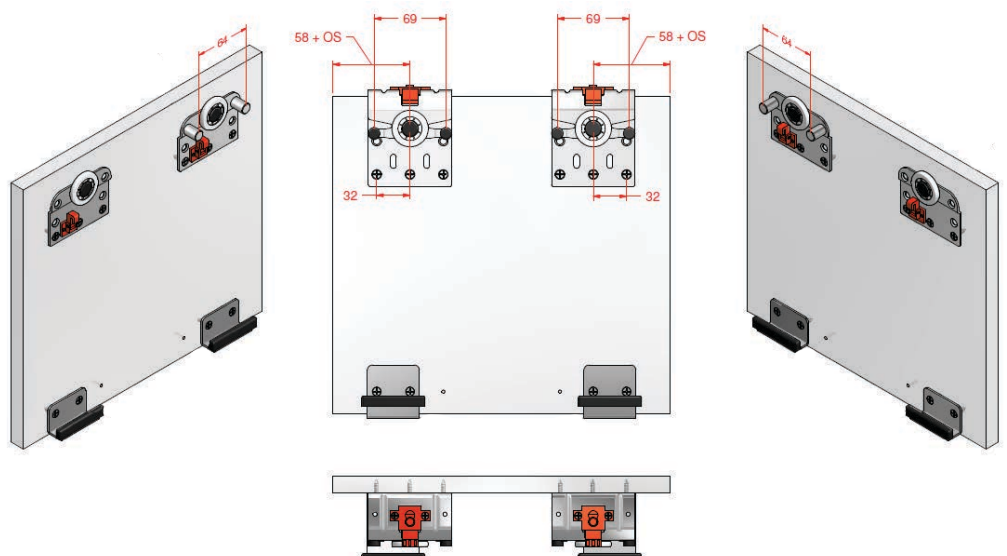
1. Locate the soft close block and soft close in the front of the corner of the wardrobe, behind the top profile and tight to the side of the cabinet



2. Screw in place



*Locations of top mechanisms and locators.*



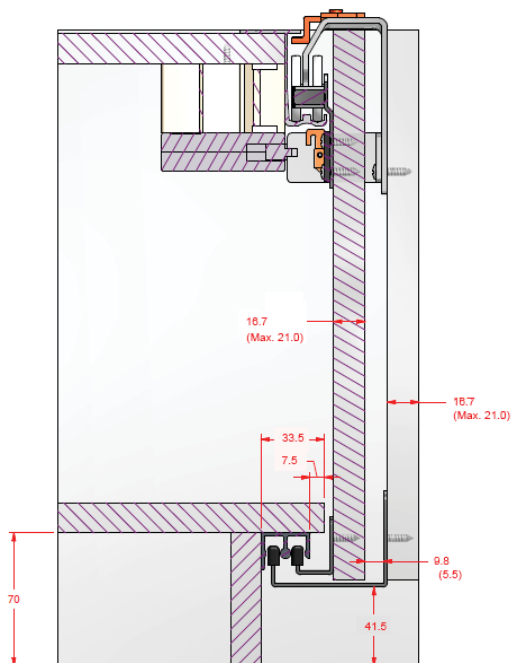
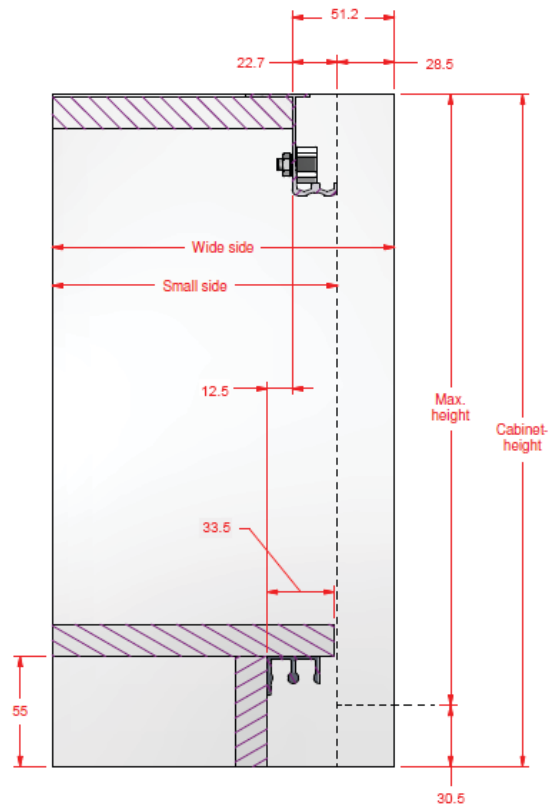
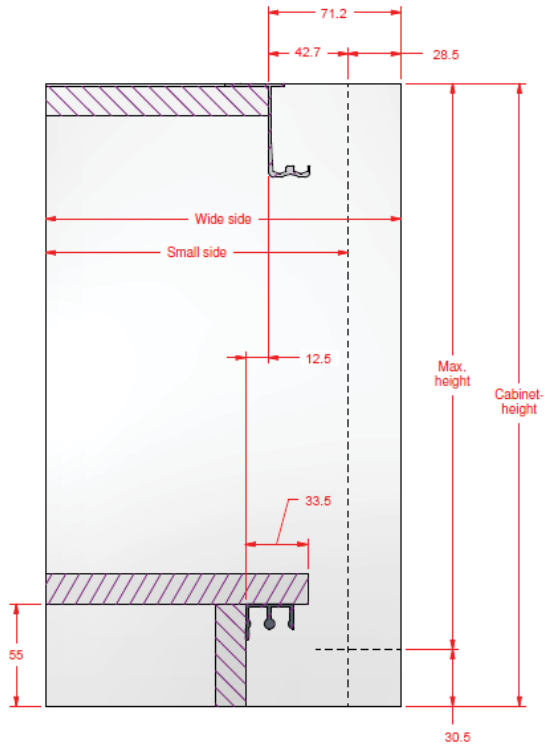


# Tekform Sliding Door Systems

## Cabinet Formation GlideSoft TP

### Sliding Door System for Top Running Tracks

Diagrams for cabinet and door measurements.

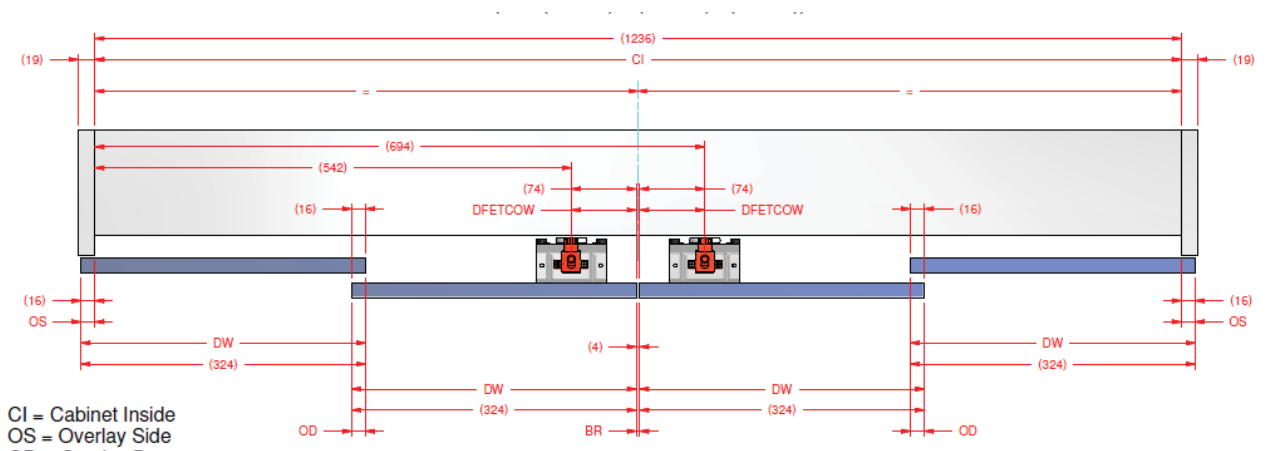


# Tekform Sliding Door Systems

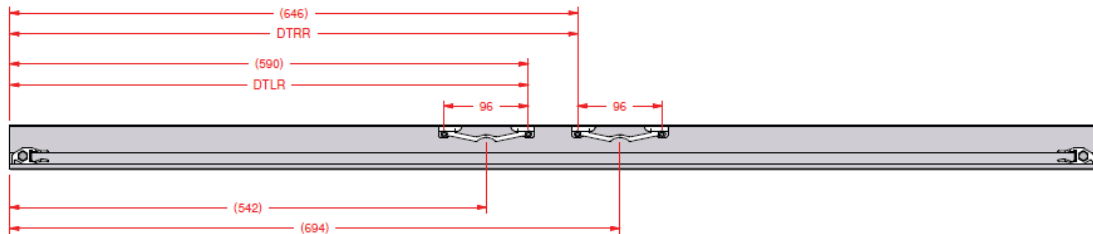
## Cabinet Formation GlideSoft TP

### Sliding Door System for Top Running Tracks

Diagrams for cabinet and door measurements.



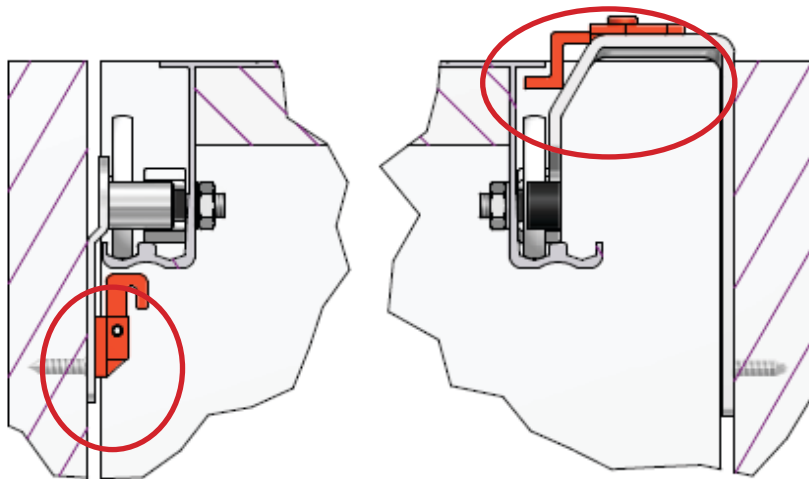
- CI = Cabinet Inside
- OS = Overlay Side
- OD = Overlay Door
- DB = Door Width
- SB = Space for Brush
- DFETCOW = 58 + OS



DTLR = Distance To Left Rivet  
 DTRR = Distance To Right Rivet  
 DFETCOW = Distance From Edge To Center Of Wheel

$$DTLR = (((CI / 2) - DFETCOW) + 48) - (0,5 \times SB) = 590$$

$$DTRR = (((CI / 2) + DFETCOW) - 48) + (0,5 \times SB) = 646$$

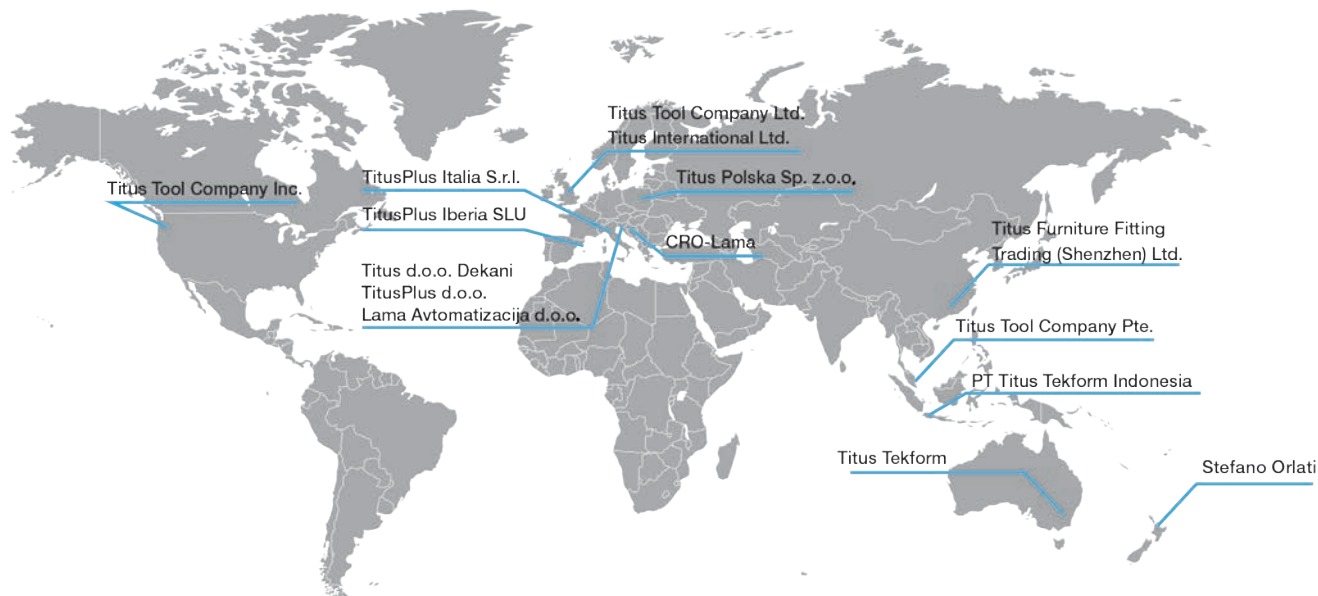


Back door mechanism

Front door mechanism

 Denotes locks in mechanisms for stability and security of doors.

# Worldwide design, manufacturing and local distribution capabilities



## Australia

### Victoria

**Titus Tekform Pty Ltd**  
8/59 Jersey Road  
Bayswater, VIC, 3153  
T: +61 3 9737 5566  
Fax: +61 3 9729 8780

**Titus Tekform Pty Ltd**  
2/24 Kane Road  
Wodonga, VIC, 3690  
T: +61 2 6056 3188  
Fax: +61 2 6056 3190

### Western Australia

**Titus Tekform Pty Ltd**  
(Biemel's Cabinet Hardware)  
5/2 Wittenberg Drive  
Canning Vale, WA, 6155  
T: +61 8 9455 2122  
Fax: +61 8 9455 3680

### South Australia

**Titus Tekform Pty Ltd**  
PO Box 357,  
Bayswater, VIC, 3153  
T: +61 8 8447 3700  
Fax: +61 8 8447 3183

### New South Wales

**Titus Tekform Pty Ltd**  
83 Jedda Road  
Prestons, NSW, 2170  
T: +61 2 9826 0007  
Fax: +61 2 9826 0074

**Titus Tekform Pty Ltd**  
Unit 3, 100 Munibung Road  
Cardiff, NSW, 2285  
T: +61 2 4954 4011  
Fax: +61 2 4354 4233

**Titus Tekform Pty Ltd**  
(John Kaye Kitchen & Cabinet Hardware)  
Cnr Heffernan & Brookes Street  
Mitchell, ACT, 2911  
T: +61 2 9826 0007  
Fax: +61 2 9826 0074

### Tasmania

**Titus Tekform Pty Ltd**  
88 Hopkins Street  
Moonah, TAS, 7009  
T: +61 3 6273 1199  
Fax: +61 3 6273 0050

### Queensland

**Titus Tekform Pty Ltd**  
76 Northlink Place  
Virginia, QLD, 4014  
T: +61 7 3266 3999  
Fax: +61 7 3266 5234

**Titus Tekform Pty Ltd**  
20 Civil Road  
Garbutt, QLD, 4814  
T: +61 7 4779 1366  
Fax: +61 7 4779 1316

### New Zealand

**Stefano Orlati Pty Ltd**  
34 Waipareira Avenue  
Henderson, Auckland, 0610  
T: +64 9 837 0886  
Fax: +64 837 8003

**Stefano Orlati Pty Ltd**  
162 Wordsworth Street  
Sydenham, Christchurch, 8023  
T: +64 3 981 8518  
Fax: +64 3 942 7296



**Titus Tekform Australia**

[www.titustekform.com.au](http://www.titustekform.com.au)

[info@titustekform.com.au](mailto:info@titustekform.com.au)

 1300-0-TITUS

**Stefano Orlati New Zealand**

[www.stefano-orlati.com](http://www.stefano-orlati.com)

[stefano-orlati@titusplus.com](mailto:stefano-orlati@titusplus.com)

**Connect with us**



[LinkedIn.com/company/titustekform](https://www.linkedin.com/company/titustekform)



[Instagram.com/titustekform](https://www.instagram.com/titustekform)



[Pinterest.com/titustekform](https://www.pinterest.com/titustekform)



["Titus Tekform"](https://www.youtube.com/channel/UC...)